

# MCMINNVILLE PLAZA

2490 OR-99W · MCMINNVILLE · OR · 97128



24,000

CARS PER DAY



## PROPERTY HIGHLIGHTS

- 1,800 - 17,340 SF
- Grocery and Soft Goods Anchored
- Located on main thoroughfare
- Great national tenant mix
- Please call for rates

## ANCHORED BY:



## DEMOGRAPHICS

	1 MILE	3 MILES	5 MILES
2016 POPULATION	4,559	30,369	45,431
2016 AVG. HH INCOME	\$59,819	\$59,736	\$61,232
2016 DAYTIME POPULATION	2,811	15,375	18,093

## CONTACT



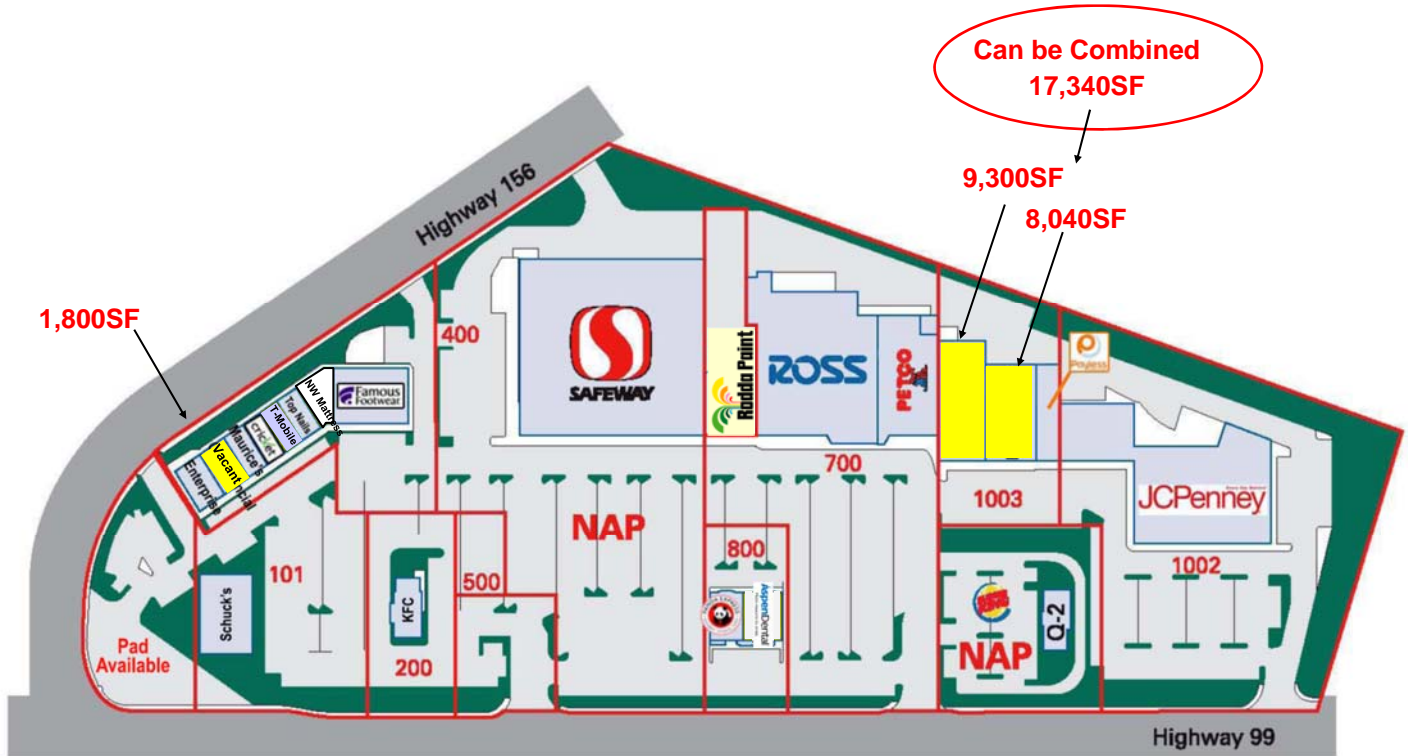
KARA PHELPS  
503-245-1400 EXT 515 - KARA@HSPACIFIC.COM



HSM Pacific Realty, Inc.  
0612 SW Idaho St, Suite 2  
Portland, OR 97239  
[www.hsmpacific.com](http://www.hsmpacific.com)

# MCMINNVILLE PLAZA

2490 OR-99W · MCMINNVILLE · OR · 97128



## Anchor Tenants

Ross	JCPenney	Petco	Safeway
------	----------	-------	---------

## Tenant List

Aspen Dental	KFC	Panda Express
Burger King	Maurice's	Payless Shoes
Cricket	NW Mattress Outlet	Rudda Paint
Enterprise Rent-A-Car	O'Reilly's	Top Nails
Famous Footwear		T-Mobile

## CONTACT



**KARA PHELPS**  
503-245-1400 EXT 515 · KARA@HSPACIFIC.COM



HSM Pacific Realty, Inc.  
0612 SW Idaho St, Suite 2  
Portland, OR 97239  
www.hspacific.com

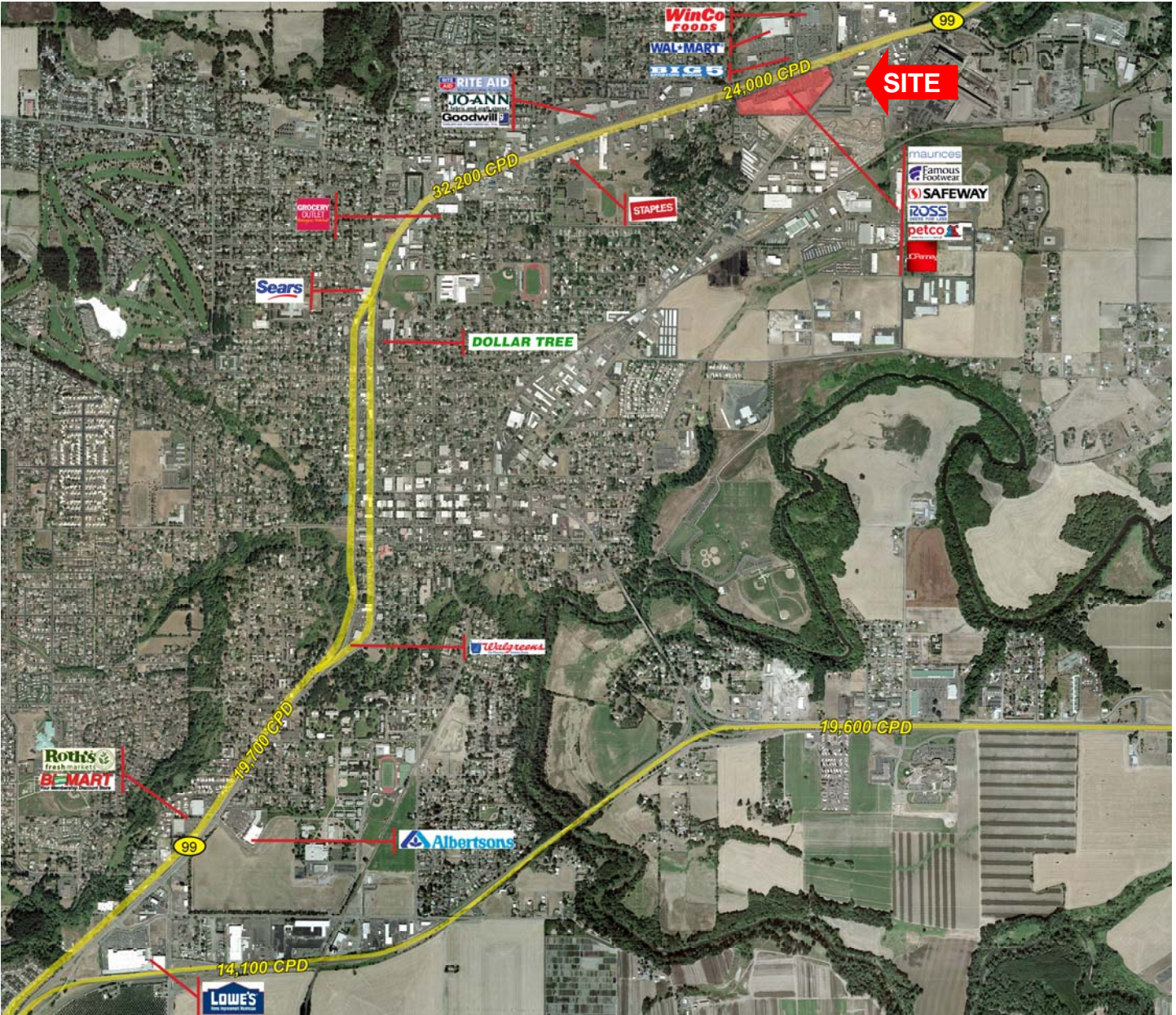


# MCMINNVILLE PLAZA

2490 OR-99W · MCMINNVILLE · OR · 97128



## AERIAL MAP:



## CONTACT



KARA PHELPS  
503-245-1400 EXT 515 · KARA@HSPACIFIC.COM



HSM Pacific Realty, Inc.  
0612 SW Idaho St, Suite 2  
Portland, OR 97239  
www.hsmpacific.com

# FULL PROFILE

2000-2010 Census, 2016 Estimates with 2021 Projections

Calculated using Weighted Block Centroid from Block Groups



Lat/Lon: 45.2277/-123.1727

RF1

## 2490 OR-99W

### Mcminnville, OR

	1 Mile	3 Miles	5 Miles	
<b>POPULATION</b>	2016 Estimated Population	4,559	30,369	45,431
	2021 Projected Population	4,748	31,623	47,208
	2010 Census Population	4,450	29,359	43,763
	2000 Census Population	3,709	25,630	36,158
	Projected Annual Growth 2016 to 2021	0.8%	0.8%	0.8%
	Historical Annual Growth 2000 to 2016	1.4%	1.2%	1.6%
	<b>HOUSEHOLDS</b>	2016 Estimated Households	1,762	11,110
2021 Projected Households		1,842	11,650	17,201
2010 Census Households		1,686	10,609	15,626
2000 Census Households		1,486	9,087	12,604
Projected Annual Growth 2016 to 2021		0.9%	1.0%	0.9%
Historical Annual Growth 2000 to 2016		1.2%	1.4%	1.9%
<b>AGE</b>		2016 Est. Population Under 10 Years	13.9%	12.4%
	2016 Est. Population 10 to 19 Years	13.1%	14.9%	15.1%
	2016 Est. Population 20 to 29 Years	13.2%	15.2%	13.9%
	2016 Est. Population 30 to 44 Years	17.6%	17.0%	17.8%
	2016 Est. Population 45 to 59 Years	16.8%	16.5%	17.4%
	2016 Est. Population 60 to 74 Years	14.8%	15.1%	15.2%
	2016 Est. Population 75 Years or Over	10.6%	8.8%	7.8%
	2016 Est. Median Age	37.0	36.9	36.9
<b>MARITAL STATUS &amp; GENDER</b>	2016 Est. Male Population	48.1%	48.2%	48.5%
	2016 Est. Female Population	51.9%	51.8%	51.5%
	2016 Est. Never Married	26.1%	30.0%	28.2%
	2016 Est. Now Married	48.3%	46.4%	48.9%
	2016 Est. Separated or Divorced	17.4%	16.1%	16.0%
	2016 Est. Widowed	8.3%	7.4%	7.0%
<b>INCOME</b>	2016 Est. HH Income \$200,000 or More	3.2%	2.7%	2.3%
	2016 Est. HH Income \$150,000 to \$199,999	1.9%	2.4%	2.8%
	2016 Est. HH Income \$100,000 to \$149,999	12.2%	10.3%	11.6%
	2016 Est. HH Income \$75,000 to \$99,999	13.1%	13.5%	14.6%
	2016 Est. HH Income \$50,000 to \$74,999	15.1%	16.7%	18.5%
	2016 Est. HH Income \$35,000 to \$49,999	17.9%	17.3%	16.6%
	2016 Est. HH Income \$25,000 to \$34,999	10.9%	12.6%	10.9%
	2016 Est. HH Income \$15,000 to \$24,999	12.0%	12.0%	11.3%
	2016 Est. HH Income Under \$15,000	13.7%	12.4%	11.4%
	2016 Est. Average Household Income	\$59,819	\$59,736	\$61,232
	2016 Est. Median Household Income	\$48,256	\$49,626	\$53,116
	2016 Est. Per Capita Income	\$23,254	\$22,434	\$22,576
2016 Est. Total Businesses	266	1,566	1,951	
2016 Est. Total Employees	2,811	15,375	18,093	

This report was produced using data from private and government sources deemed to be reliable. The information herein is provided without representation or warranty.



# FULL PROFILE

2000-2010 Census, 2016 Estimates with 2021 Projections

Calculated using Weighted Block Centroid from Block Groups



Lat/Lon: 45.2277/-123.1727

RF1

## 2490 OR-99W

### Mcminnville, OR

	1 Mile	3 Miles	5 Miles
<b>RACE</b>			
2016 Est. White	79.7%	81.2%	82.3%
2016 Est. Black	0.8%	1.0%	0.9%
2016 Est. Asian or Pacific Islander	1.8%	1.9%	1.8%
2016 Est. American Indian or Alaska Native	1.3%	1.2%	1.1%
2016 Est. Other Races	16.3%	14.6%	14.0%
<b>HISPANIC</b>			
2016 Est. Hispanic Population	1,082	6,594	9,486
2016 Est. Hispanic Population	23.7%	21.7%	20.9%
2021 Proj. Hispanic Population	25.5%	23.2%	22.3%
2010 Hispanic Population	21.2%	20.3%	19.5%
<b>EDUCATION (Adults 25 or Older)</b>			
2016 Est. Adult Population (25 Years or Over)	3,028	19,236	29,106
2016 Est. Elementary (Grade Level 0 to 8)	6.4%	7.5%	7.7%
2016 Est. Some High School (Grade Level 9 to 11)	5.8%	7.6%	7.4%
2016 Est. High School Graduate	33.7%	31.7%	31.6%
2016 Est. Some College	22.3%	25.5%	24.8%
2016 Est. Associate Degree Only	8.4%	6.8%	7.2%
2016 Est. Bachelor Degree Only	15.0%	11.9%	12.4%
2016 Est. Graduate Degree	8.4%	8.9%	8.8%
<b>HOUSING</b>			
2016 Est. Total Housing Units	1,818	11,473	16,979
2016 Est. Owner-Occupied	48.5%	56.2%	60.8%
2016 Est. Renter-Occupied	48.4%	40.6%	36.0%
2016 Est. Vacant Housing	3.1%	3.2%	3.1%
<b>HOMES BUILT BY YEAR</b>			
2010 Homes Built 2005 or later	6.8%	8.9%	9.0%
2010 Homes Built 2000 to 2004	7.0%	8.7%	11.3%
2010 Homes Built 1990 to 1999	22.3%	20.9%	22.0%
2010 Homes Built 1980 to 1989	17.9%	15.4%	13.5%
2010 Homes Built 1970 to 1979	19.4%	16.3%	16.1%
2010 Homes Built 1960 to 1969	8.4%	8.5%	7.5%
2010 Homes Built 1950 to 1959	7.8%	7.3%	6.6%
2010 Homes Built Before 1949	10.3%	14.0%	14.1%
<b>HOME VALUES</b>			
2010 Home Value \$1,000,000 or More	1.6%	0.5%	0.5%
2010 Home Value \$500,000 to \$999,999	6.0%	4.4%	4.8%
2010 Home Value \$400,000 to \$499,999	5.1%	5.5%	5.1%
2010 Home Value \$300,000 to \$399,999	13.4%	14.2%	13.7%
2010 Home Value \$200,000 to \$299,999	38.9%	34.1%	31.3%
2010 Home Value \$150,000 to \$199,999	17.9%	21.7%	22.4%
2010 Home Value \$100,000 to \$149,999	7.3%	7.0%	8.1%
2010 Home Value \$50,000 to \$99,999	2.4%	3.1%	4.3%
2010 Home Value \$25,000 to \$49,999	2.1%	3.4%	3.6%
2010 Home Value Under \$25,000	5.3%	6.2%	6.0%
2010 Median Home Value	\$227,630	\$220,058	\$215,849
2010 Median Rent	\$674	\$711	\$737

This report was produced using data from private and government sources deemed to be reliable. The information herein is provided without representation or warranty.

# FULL PROFILE

2000-2010 Census, 2016 Estimates with 2021 Projections

Calculated using Weighted Block Centroid from Block Groups



Lat/Lon: 45.2277/-123.1727

RF1

## 2490 OR-99W

### Mcminville, OR

		1 Mile	3 Miles	5 Miles
<b>LABOR FORCE</b>	2016 Est. Labor Population Age 16 Years or Over	3,561	24,285	35,922
	2016 Est. Civilian Employed	57.0%	56.1%	57.1%
	2016 Est. Civilian Unemployed	0.7%	3.3%	3.2%
	2016 Est. in Armed Forces	-	-	-
	2016 Est. not in Labor Force	42.3%	40.6%	39.7%
	2016 Labor Force Males	47.3%	47.5%	47.8%
	2016 Labor Force Females	52.7%	52.5%	52.2%
<b>OCCUPATION</b>	2010 Occupation: Population Age 16 Years or Over	1,669	11,670	17,949
	2010 Mgmt, Business, & Financial Operations	10.0%	10.4%	10.9%
	2010 Professional, Related	18.7%	20.6%	20.5%
	2010 Service	22.0%	20.9%	20.1%
	2010 Sales, Office	22.5%	23.4%	23.9%
	2010 Farming, Fishing, Forestry	4.2%	4.8%	4.1%
	2010 Construction, Extraction, Maintenance	9.7%	7.5%	7.4%
	2010 Production, Transport, Material Moving	12.9%	12.4%	13.0%
	2010 White Collar Workers	51.2%	54.5%	55.4%
	2010 Blue Collar Workers	48.8%	45.5%	44.6%
<b>TRANSPORTATION TO WORK</b>	2010 Drive to Work Alone	73.3%	74.5%	76.7%
	2010 Drive to Work in Carpool	14.7%	12.7%	12.4%
	2010 Travel to Work by Public Transportation	1.3%	0.7%	0.6%
	2010 Drive to Work on Motorcycle	0.3%	0.5%	0.3%
	2010 Walk or Bicycle to Work	7.3%	7.9%	5.9%
	2010 Other Means	0.1%	0.4%	0.4%
	2010 Work at Home	3.1%	3.2%	3.7%
<b>TRAVEL TIME</b>	2010 Travel to Work in 14 Minutes or Less	44.7%	47.9%	42.9%
	2010 Travel to Work in 15 to 29 Minutes	28.3%	26.6%	27.9%
	2010 Travel to Work in 30 to 59 Minutes	15.6%	17.2%	20.5%
	2010 Travel to Work in 60 Minutes or More	11.5%	8.3%	8.7%
	2010 Average Travel Time to Work	16.2	15.3	16.8
<b>CONSUMER EXPENDITURE</b>	2016 Est. Total Household Expenditure	\$86.8 M	\$546 M	\$823 M
	2016 Est. Apparel	\$3.01 M	\$18.9 M	\$28.5 M
	2016 Est. Contributions, Gifts	\$5.48 M	\$34.6 M	\$52.2 M
	2016 Est. Education, Reading	\$3.16 M	\$19.6 M	\$29.5 M
	2016 Est. Entertainment	\$4.82 M	\$30.4 M	\$45.9 M
	2016 Est. Food, Beverages, Tobacco	\$13.6 M	\$85.3 M	\$128 M
	2016 Est. Furnishings, Equipment	\$2.91 M	\$18.3 M	\$27.8 M
	2016 Est. Health Care, Insurance	\$7.82 M	\$49.3 M	\$73.9 M
	2016 Est. Household Operations, Shelter, Utilities	\$27.0 M	\$170 M	\$255 M
	2016 Est. Miscellaneous Expenses	\$1.30 M	\$8.20 M	\$12.3 M
	2016 Est. Personal Care	\$1.13 M	\$7.11 M	\$10.7 M
2016 Est. Transportation	\$16.6 M	\$105 M	\$159 M	

This report was produced using data from private and government sources deemed to be reliable. The information herein is provided without representation or warranty.