

FMR BANNER BANK - CEDAR HILLS



3180 SW CEDAR HILLS · BEAVERTON · OR · 97005

25,000

CARS PER DAY



PROPERTY HIGHLIGHTS

- 2,200 SF Available November 1, 2018 *
- Prominent End Cap
- Located on main thoroughfare of Cedar Hills—25,000 CPD
- Signalized access point
- Call for rates

AREA CO-TENANTS:



* DO NOT DISTURB CURRENT TENANT

DEMOGRAPHICS

	1 MILE	3 MILES	5 MILES
2017 POPULATION	13,579	144,243	363,259
2017 AVG. HH INCOME	\$68,927	\$86,962	\$97,837
2017 DAYTIME POPULATION	10,546	71,781	131,434

CONTACT



KARA PHELPS
503-245-1400 EXT 515 - KARA@HSPACIFIC.COM
BROCK SWITZER
503-245-1400 EXT 518 - BROCK@HSPACIFIC.COM

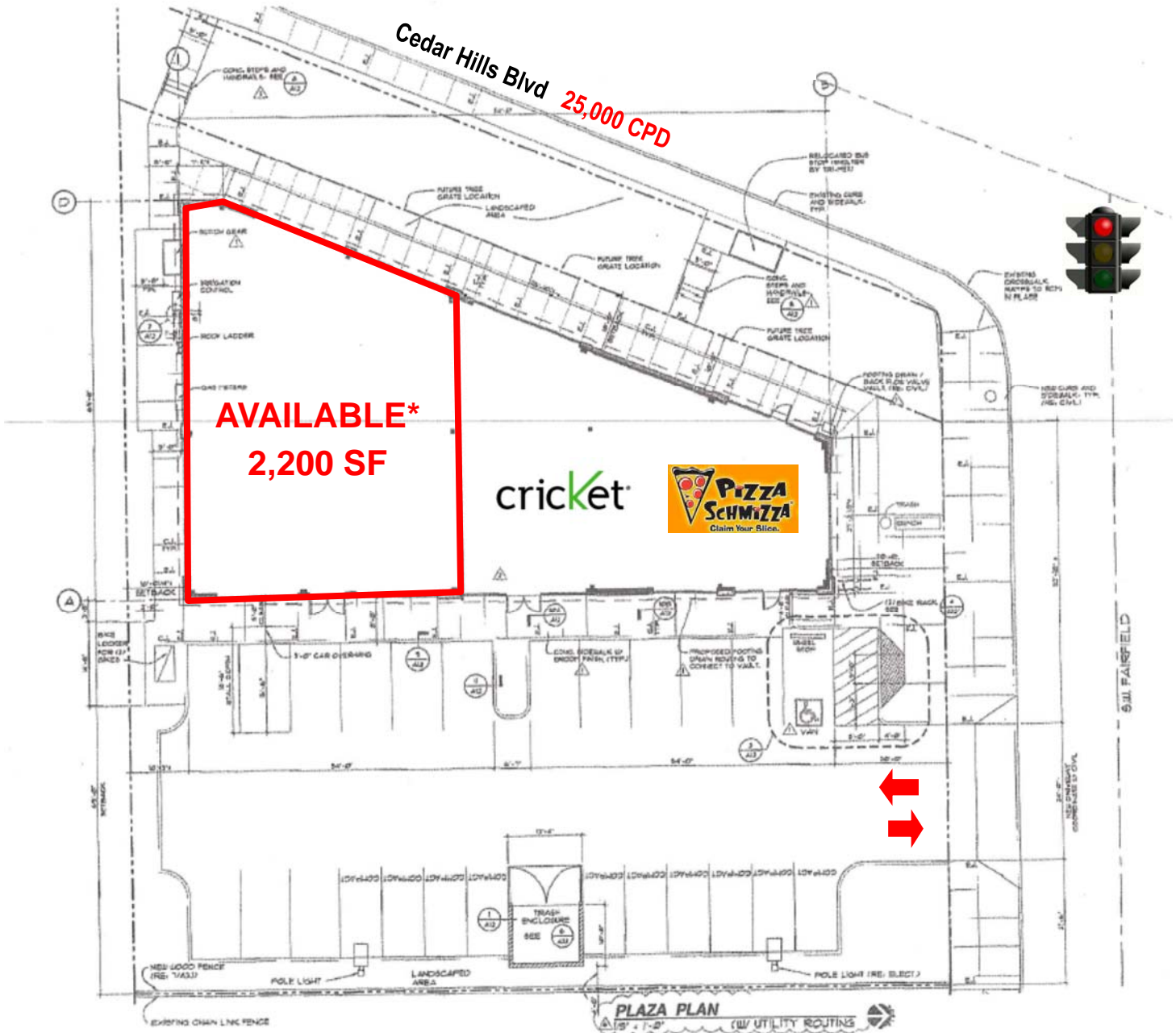


HSM Pacific Realty, Inc.
0612 SW Idaho St, Suite 2
Portland, OR 97239
www.hsmpacific.com

FMR BANNER BANK - CEDAR HILLS



3180 SW CEDAR HILLS · BEAVERTON · OR · 97005



AVAILABLE*
2,200 SF

cricket



PLAZA PLAN
1/8" = 1'-0" (W/ UTILITY ROUTINGS)

*** DO NOT DISTURB CURRENT TENANT**

CONTACT



KARA PHELPS
503-245-1400 EXT 515 · KARA@HSPACIFIC.COM

BROCK SWITZER
503-245-1400 EXT 518 · BROCK@HSPACIFIC.COM

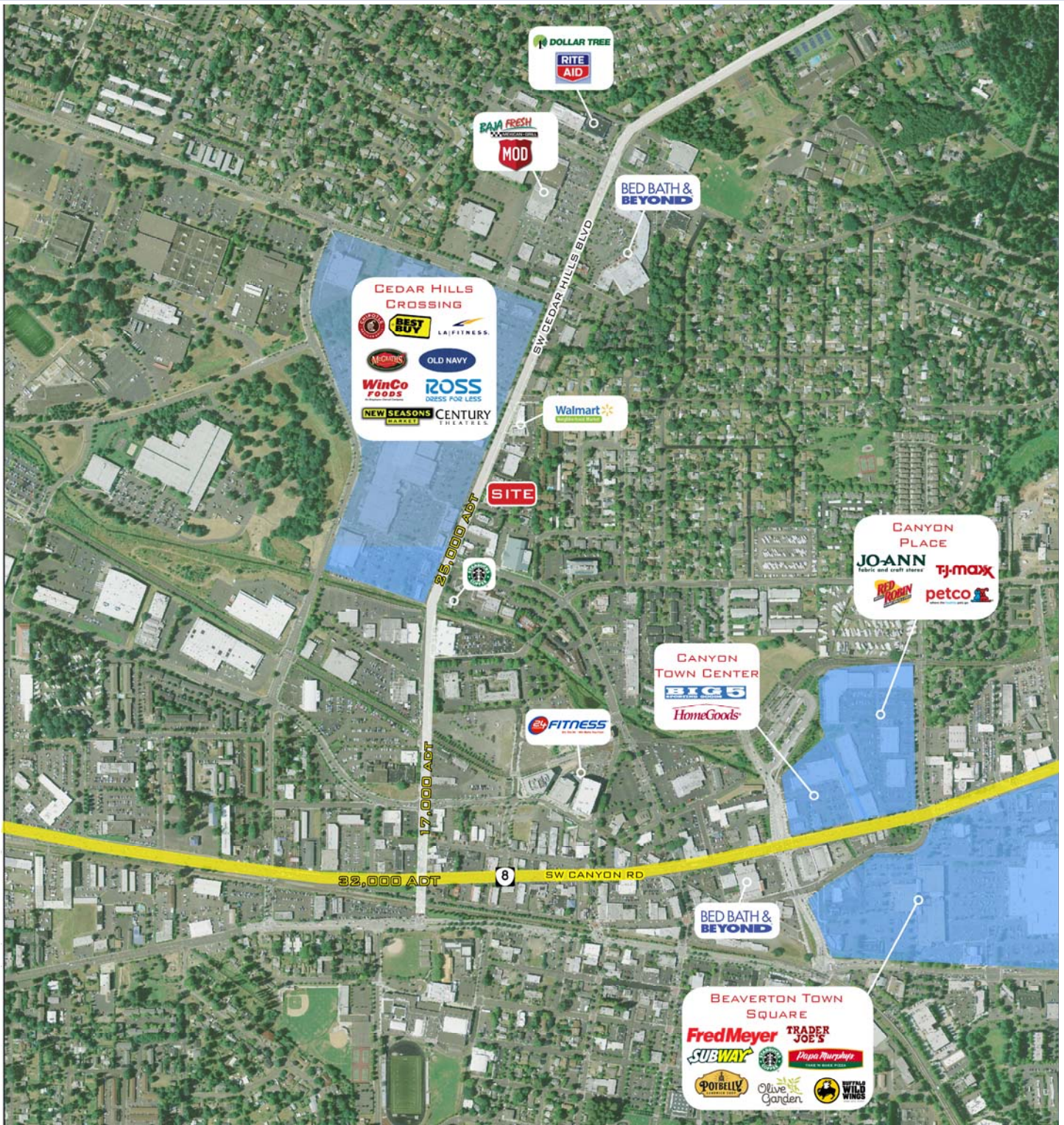


HSM Pacific Realty, Inc.
0612 SW Idaho St, Suite 2
Portland, OR 97239
www.hspacific.com

FMR BANNER BANK - CEDAR HILLS



3180 SW CEDAR HILLS · BEAVERTON · OR · 97005



CONTACT



KARA PHELPS
503-245-1400 EXT 515 - KARA@HSPACIFIC.COM

BROCK SWITZER
503-245-1400 EXT 518 - BROCK@HSPACIFIC.COM



HSM Pacific Realty, Inc.
0612 SW Idaho St, Suite 2
Portland, OR 97239
www.hspacific.com