

MULTNOMAH VILLAGE

3839 SW MULTNOMAH BLVD · PORTLAND · OR



PROPERTY HIGHLIGHTS

- 3,000 - 5,645 SF
- Athletic club build-out in 3,000 SF
- Open warehouse space can add additional 2,645 SF negotiable
- High open truss ceilings
- 2 bathrooms + shower
- Zoned CM2

DEMOGRAPHICS

	1 MILE	3 MILES	5 MILES
2017 POPULATION	15,592	109,759	350,911
2017 AVG. HH INCOME	\$87,894	\$111,560	\$97,521
2017 DAYTIME POPULATION	5,798	65,090	333,081

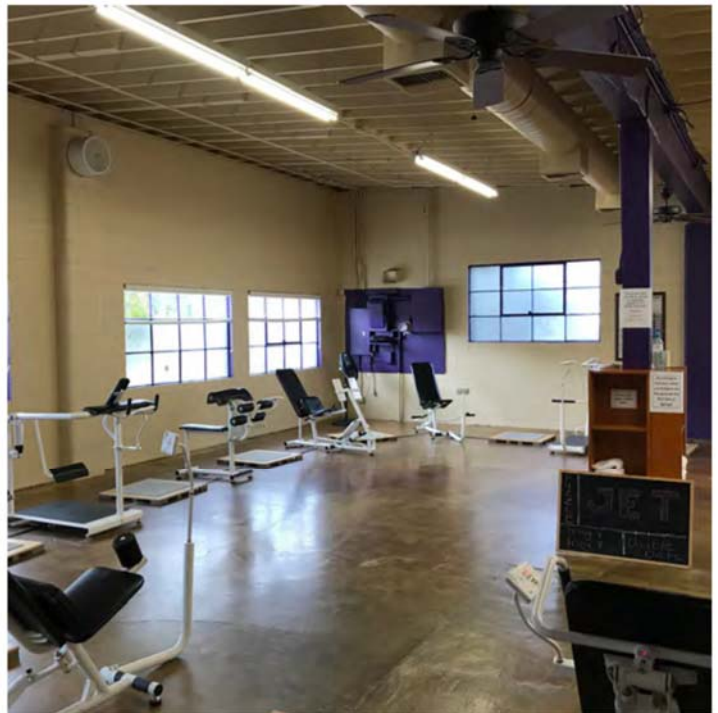
CONTACT:

MARK PISCITELLI markp@hsmPacific.com 503.245.1400 x514



MULTNOMAH VILLAGE

3839 SW MULTNOMAH BLVD · PORTLAND · OR



CONTACT:

MARK PISCITELLI

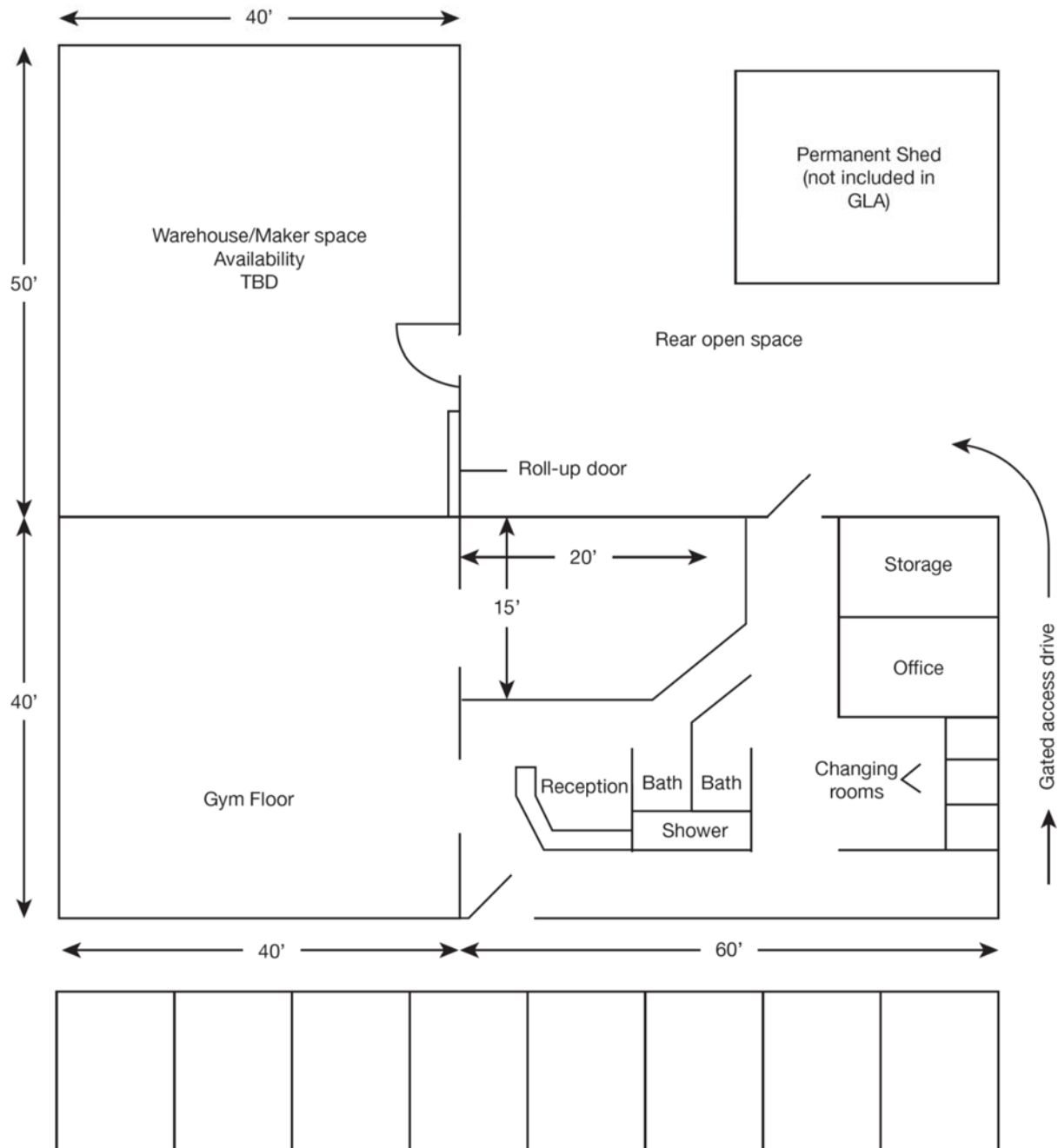
markp@hsmacific.com

503.245.1400 x514



MULTNOMAH VILLAGE

3839 SW MULTNOMAH BLVD · PORTLAND · OR



*Not to scale

CONTACT:

MARK PISCITELLI

markp@hsmacific.com

503.245.1400 x514



MULTNOMAH VILLAGE

3839 SW MULTNOMAH BLVD · PORTLAND · OR



CONTACT:

MARK PISCITELLI

markp@hsmpacific.com

503.245.1400 x514

