

# 1323 SE 7TH AVE.

PORTLAND · OR



## CLOSE-IN PRODUCTION / RETAIL SPACE



### PROPERTY HIGHLIGHTS

- 1,890 SF
- Former chocolate production space
- Highly visible corner on SE 7th & SE Main St
- Exciting co-tenancy with 2015 Restaurant of the year: Renata
- Production use with dedicated retail footprint
- Zoned IG1, call for details regarding retail use

### DEMOGRAPHICS

	1 MILE	3 MILES	5 MILES
2017 POPULATION	18,502	210,983	453,597
2017 AVG. HH INCOME	\$70,123	\$90,318	\$87,442
2017 DAYTIME POPULATION	47,265	272,1185	358,576

### CONTACT:

MARK PISCITELLI

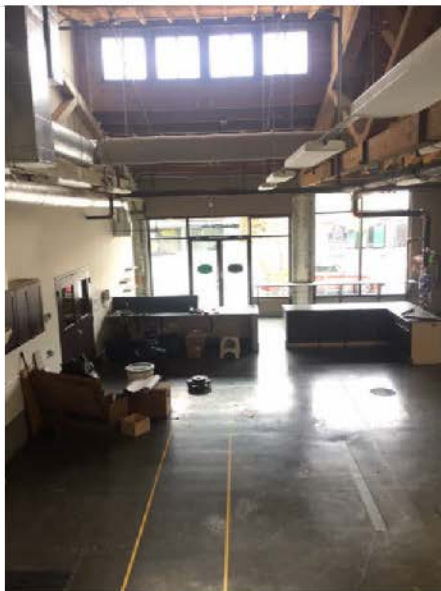
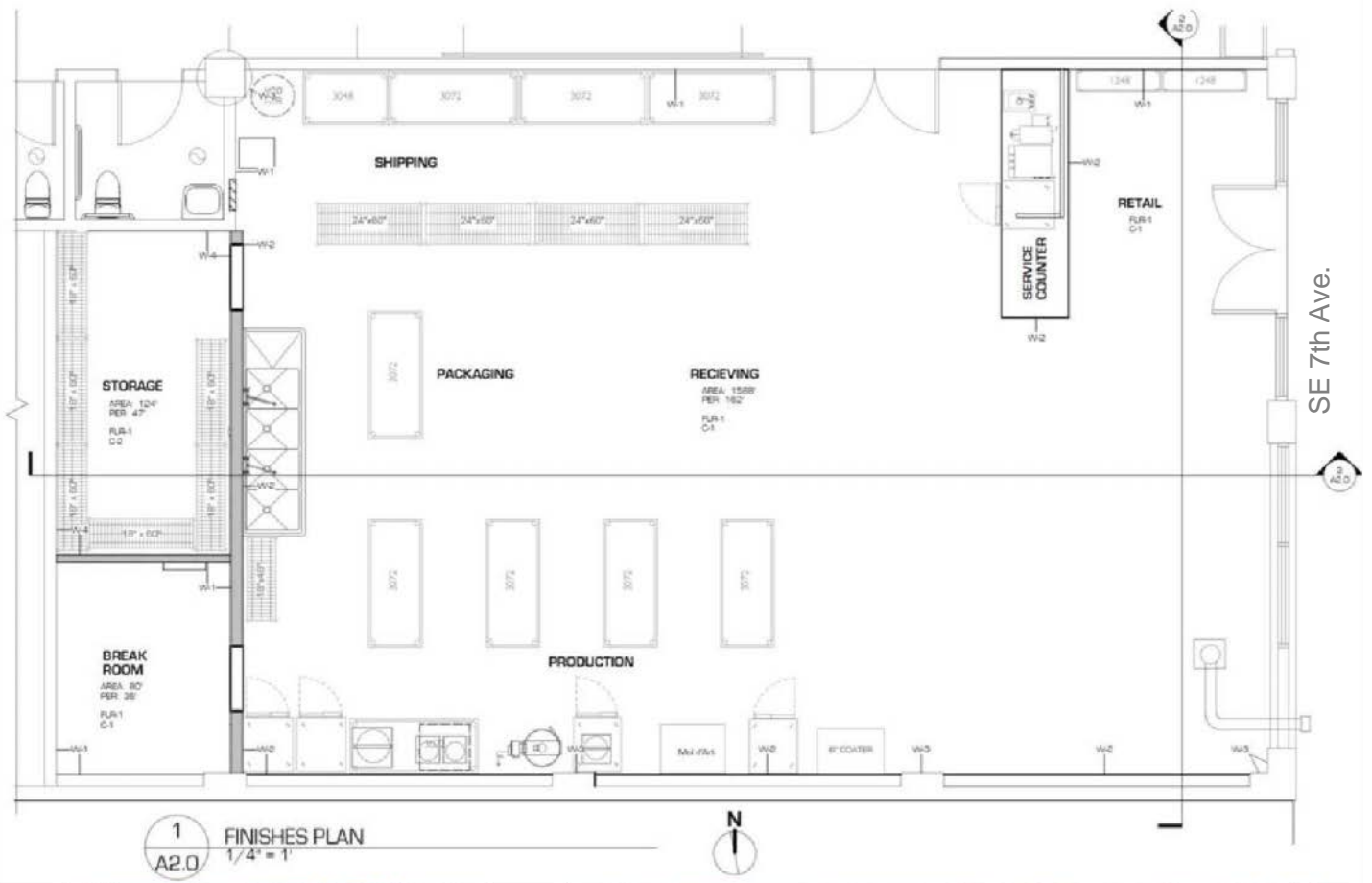
markp@hsmacific.com

503.245.1400 x514



# 1323 SE 7TH AVE.

PORTLAND · OR



## CONTACT:

MARK PISCITELLI

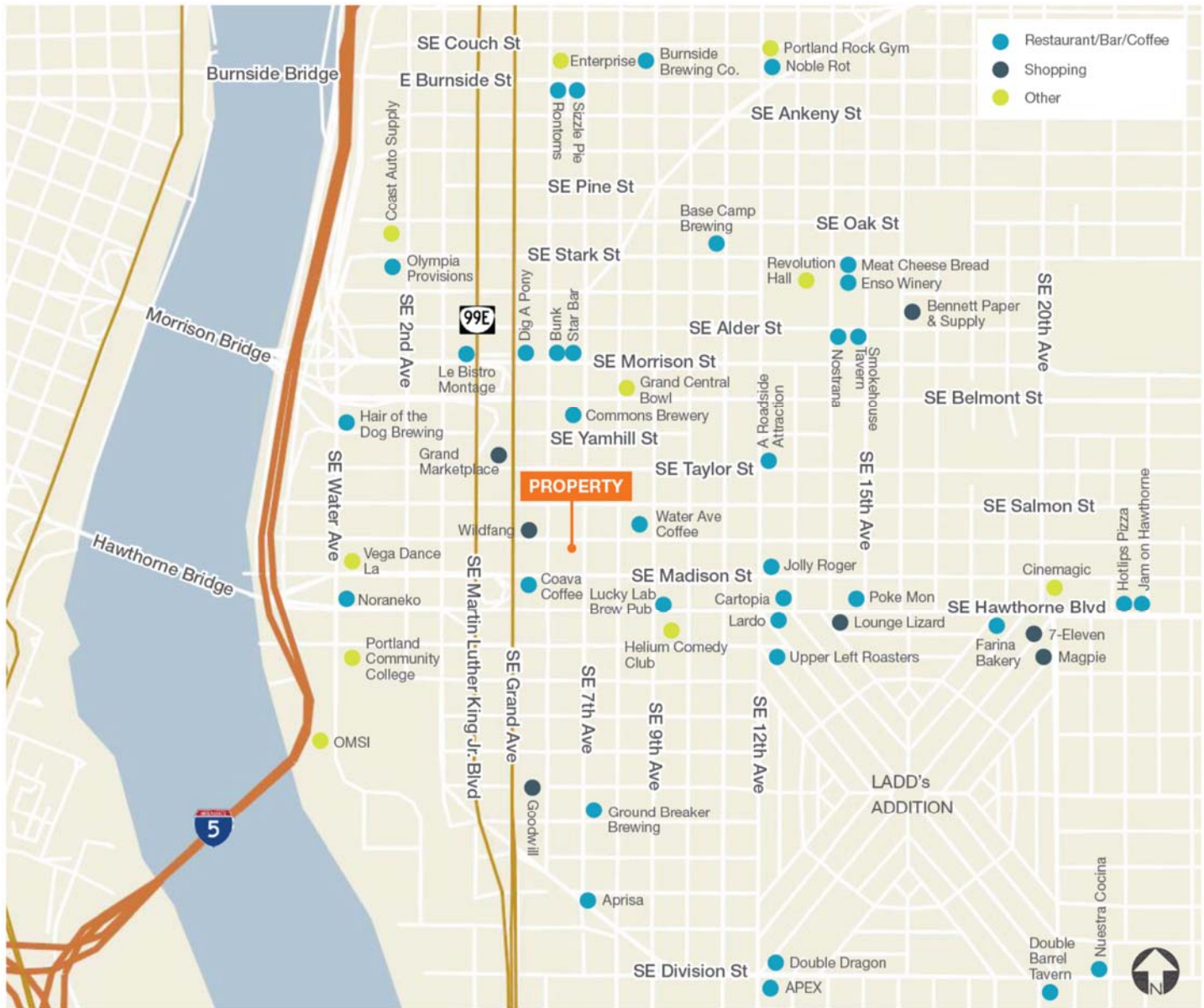
markp@hsmacific.com

503.245.1400 x514



# 1323 SE 7TH AVE.

PORTLAND · OR



## CONTACT:

MARK PISCITELLI

markp@hsmPacific.com

503.245.1400 x514

