

# 7 NW 9



*Flagship Retail Location Available*  
7 NW 9TH STREET IN PORTLAND'S PEARL DISTRICT

For More Information, Contact:  
David Demers & Melissa Martin  
[david@hsmacific.com](mailto:david@hsmacific.com) & [melissa@hsmacific.com](mailto:melissa@hsmacific.com)  
503-245-1400  
612 S Idaho Street, Suite 2, Portland, Oregon 97239





# 10,000 SF BUILDING WITH 2 LEVELS OF 5,000 SF EACH

- ▲ Highly visible West Burnside location
- ▲ Ideal retail flagship opportunity
- ▲ High traffic corridor in the Pearl District
- ▲ Close proximity to the Brewery Blocks; retailers in the area are Lulu Lemon, West Elm, Whole Foods, Powell's Books, Madewell & Anthropologie
- ▲ Call for rates

## *Businesses Headquartered in Downtown Portland*

Vacasa

Rumpl Inc.

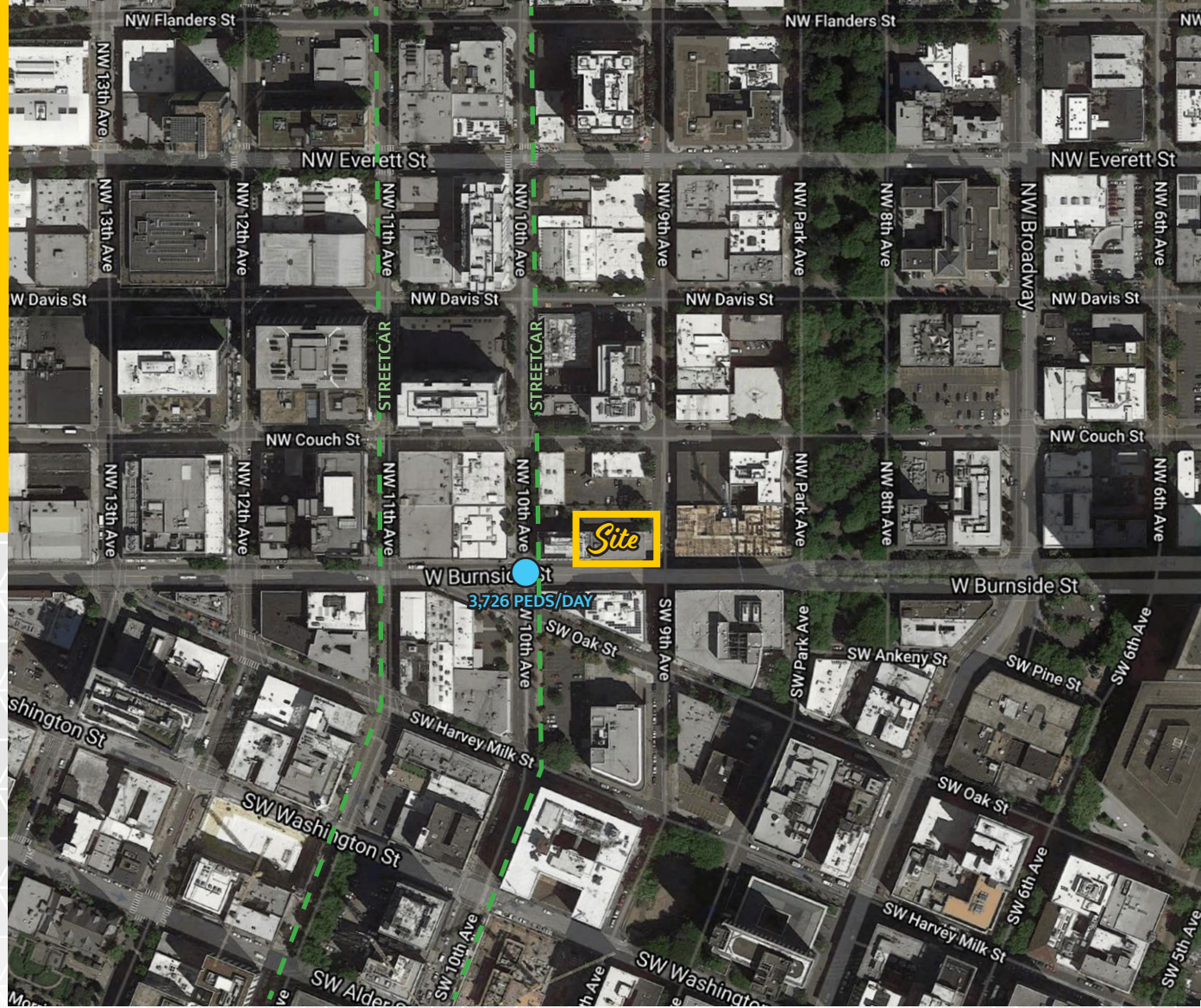
Keen Footwear

Stoel Rives Law Firm

Cambia Health Solutions

Twistlock Software Company

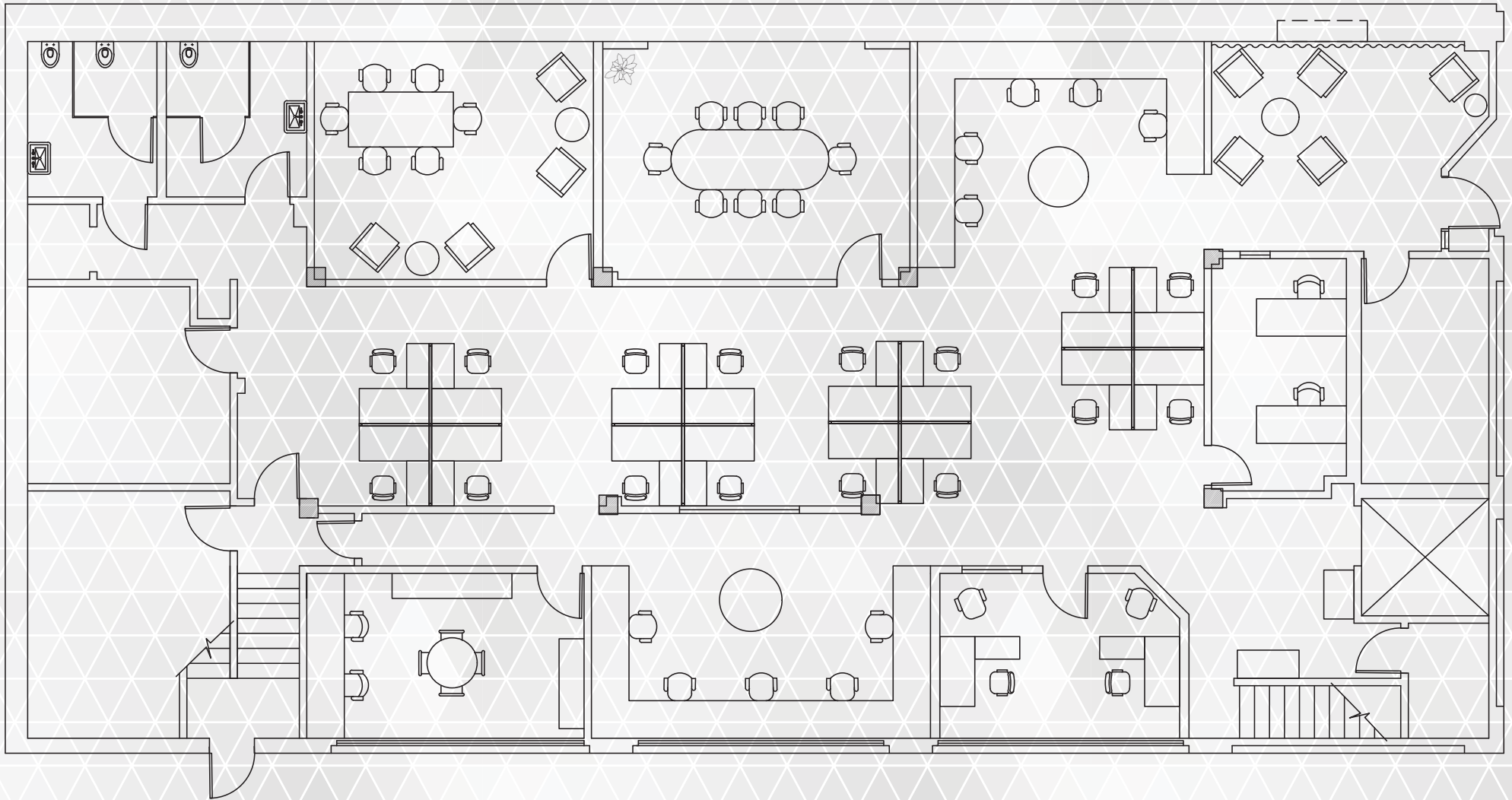
Diamond WTG Engineering & Services Inc



### NEIGHBORHOOD EMPLOYERS:

Google  
Mercy Corps  
Miller Nash Graham & Dunn  
New Relic  
University of Oregon-Portland  
Pacific Northwest College of Art  
Powell's City of Books

# Floor Plan Option



## DEMOGRAPHICS

(WITHIN A HALF MILE)

*Population*

14,521

*Average HH Income*

\$87,741

*Daytime Population*

68,840

*Number of Employees*

62,628