

RETAIL SHOP SPACE FOR LEASE



390 NW Burnside Rd, Gresham, OR 97030

4,420 SF Available

- Substantial Medical Build-out
- Renovated Facade throughout center
- Abundant Parking - 426 spaces
- New landscaping, lighting, common area improvements and signage
- Last vacancy in Gresham Square

DEMOGRAPHICS



1 MILE - 18,480
3 MILE - 138,504
5 MILE - 224,107



AVERAGE
1 MILE - \$88,830
3 MILE - \$98,788
5 MILE - \$101,397



1 MILE - 8,599
3 MILE - 36,277
5 MILE - 60,945

GRESHAM SQUARE

GRESHAM, OR

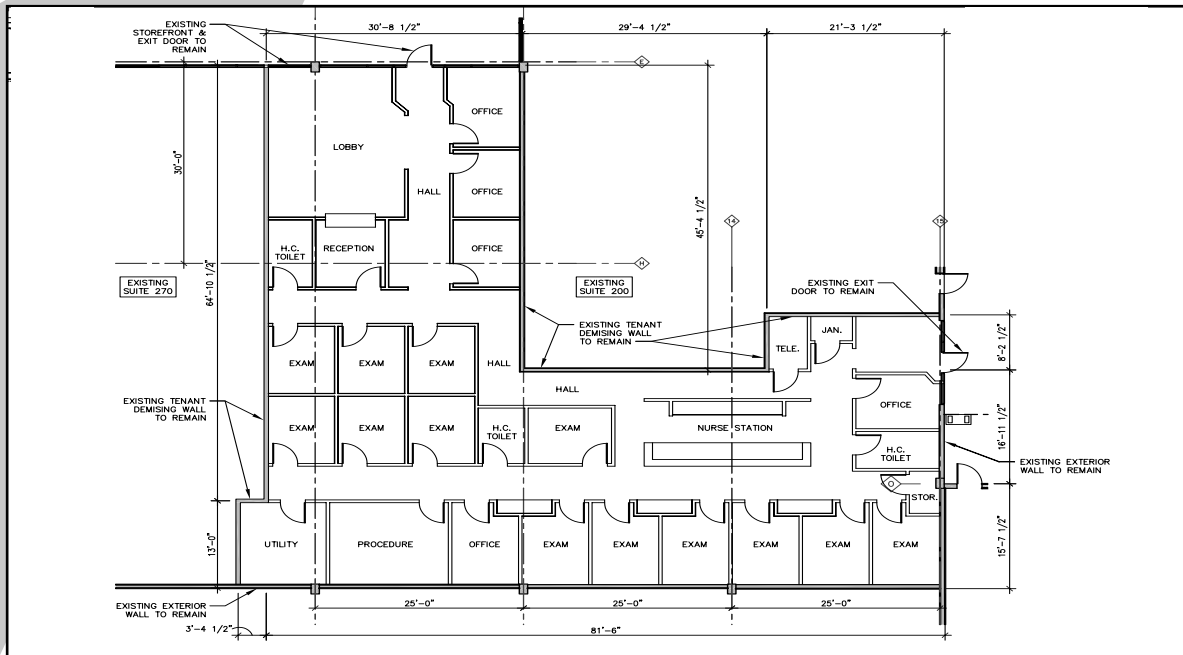
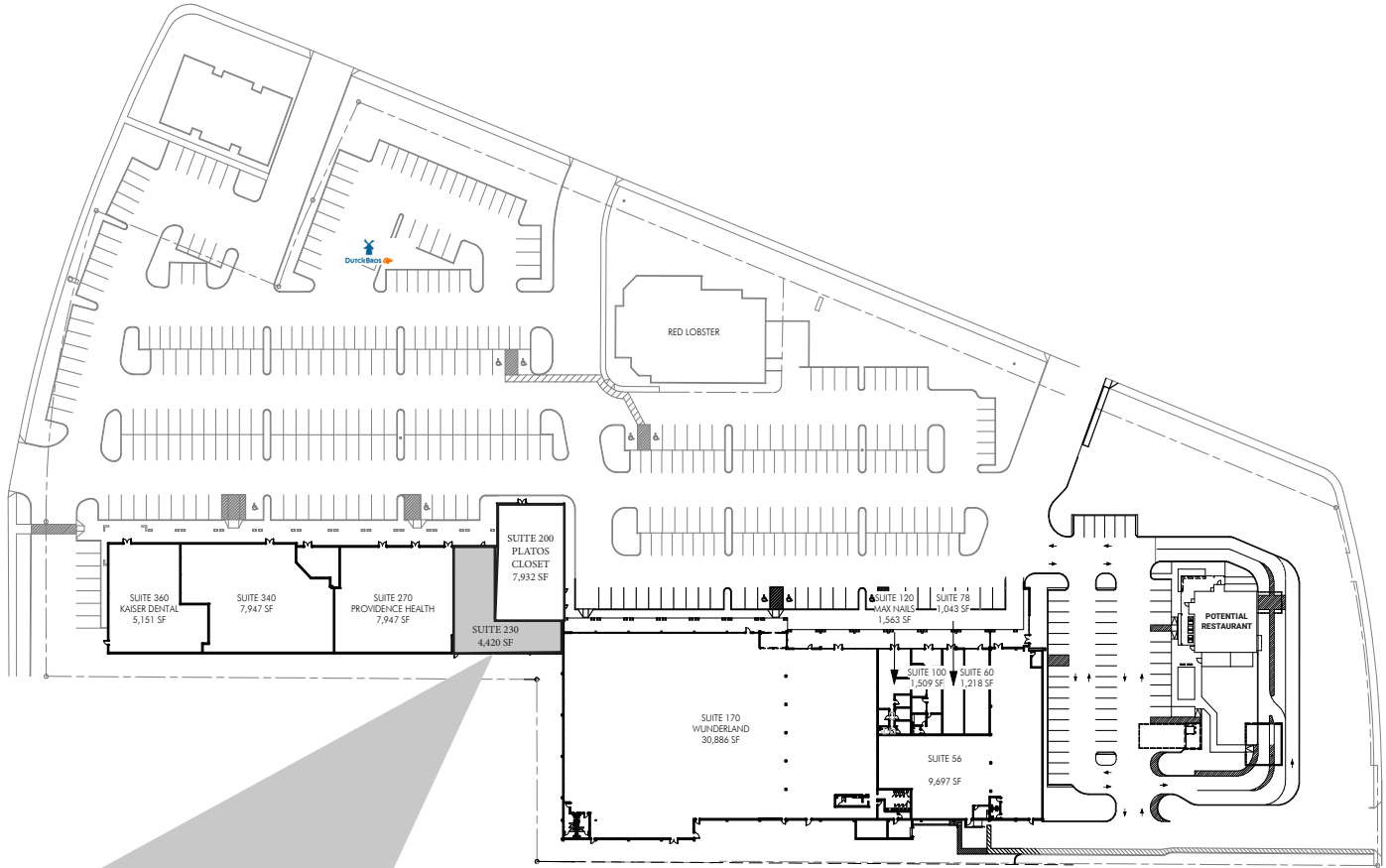
David Demers
(503) 245-1400 Ext 521
david@hsmPacific.com

Brock Switzer
(503) 245-1400 Ext 518
brock@hsmPacific.com

Kara Phelps
(503) 245-1400 Ext 515
kara@hsmPacific.com

HSM
PACIFIC
retail solutions
HSM Pacific Realty, Inc.
4260 Galewood St Ste B
Lake Oswego, OR 97035
www.hsmPacific.com

RETAIL SHOP SPACE FOR LEASE



GRESHAM SQUARE

GRESHAM, OR

David Demers
 (503) 245-1400 Ext 521
 david@hspacific.com

Brock Switzer
 (503) 245-1400 Ext 518
 brock@hspacific.com

Kara Phelps
 (503) 245-1400 Ext 515
 kara@hspacific.com



HSM Pacific Realty, Inc.
 4260 Galewood St Ste B
 Lake Oswego, OR 97035
 www.hspacific.com

AERIAL



GRESHAM SQUARE

GRESHAM, OR

David Demers
(503) 245-1400 Ext 521
david@hsmpacific.com

Brock Switzer
(503) 245-1400 Ext 518
brock@hsmpacific.com

Kara Phelps
(503) 245-1400 Ext 515
kara@hsmpacific.com



HSM Pacific Realty, Inc.
4260 Galewood St Ste B
Lake Oswego, OR 97035
www.hsmpacific.com