

HARMONY VIEW RETAIL PADS

NE 18TH STREET & NE 172ND AVE
VANCOUVER, WA



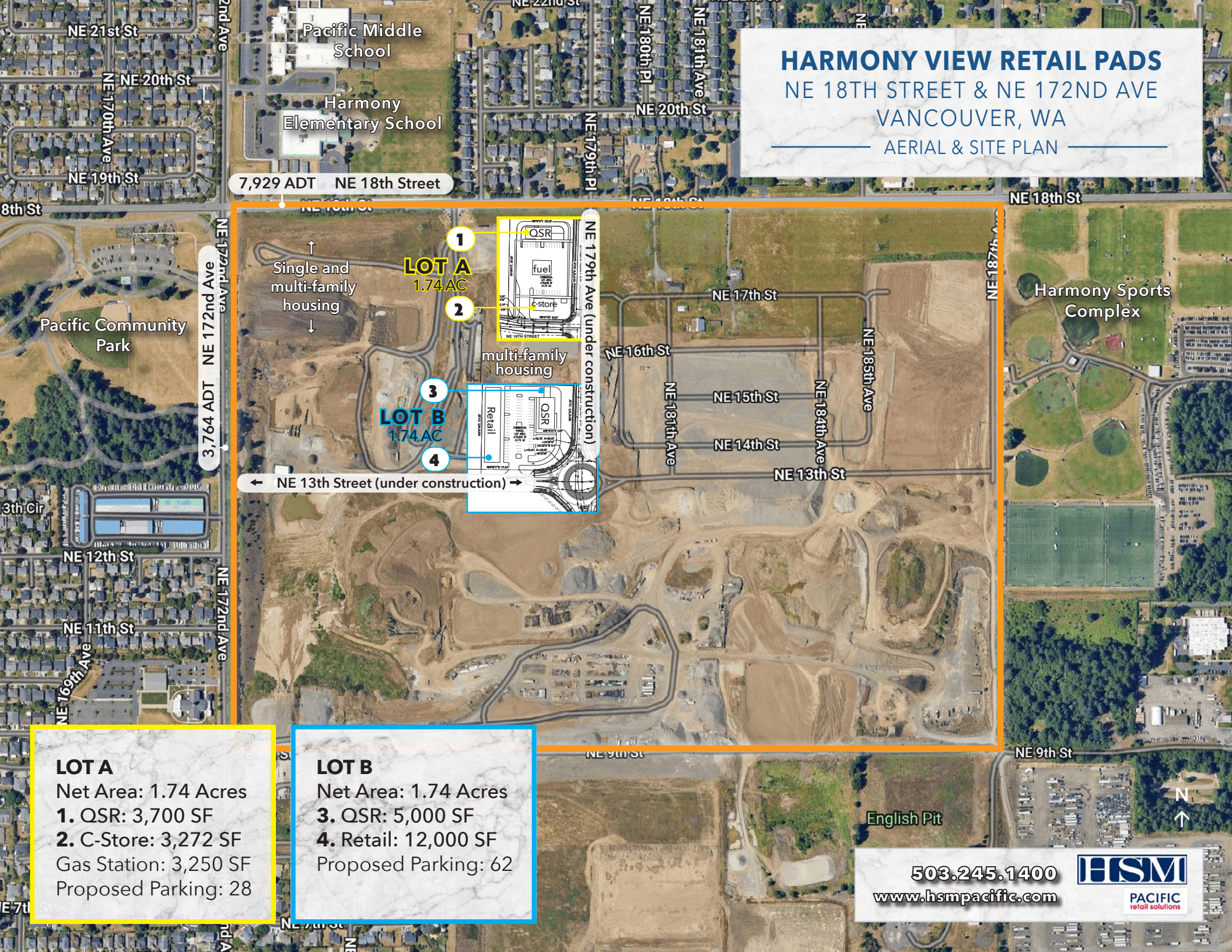
SITE

503.245.1400
www.hsmpacific.com



HARMONY VIEW RETAIL PADS

NE 18TH STREET & NE 172ND AVE
VANCOUVER, WA
AERIAL & SITE PLAN



7,929 ADT NE 18th Street

3,764 ADT NE 172nd Ave

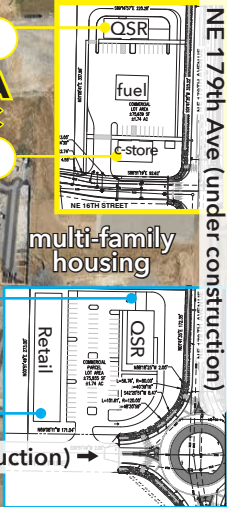
← NE 13th Street (under construction) →

1
LOT A
1.74 AC

2
multi-family housing

3
LOT B
1.74 AC

4



LOT A
Net Area: 1.74 Acres
1. QSR: 3,700 SF
2. C-Store: 3,272 SF
Gas Station: 3,250 SF
Proposed Parking: 28

LOT B
Net Area: 1.74 Acres
3. QSR: 5,000 SF
4. Retail: 12,000 SF
Proposed Parking: 62

503.245.1400
www.hsmpacific.com

HARMONY VIEW RETAIL PADS

NE 18TH STREET & NE 172ND AVE

VANCOUVER, WA

SITE PLAN, LOT A

LOT A

Net Area: 1.74 Acres

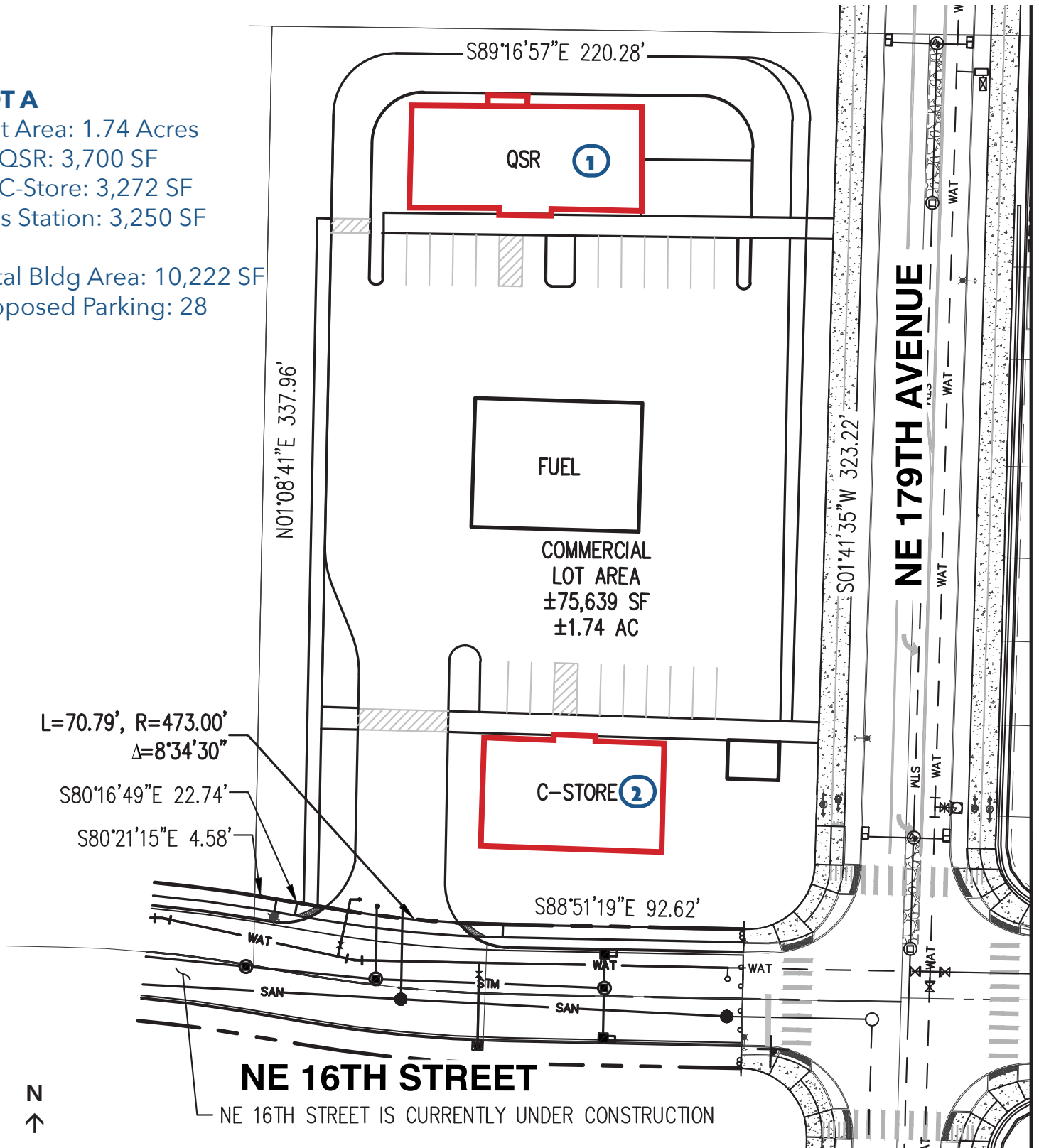
1. QSR: 3,700 SF

2. C-Store: 3,272 SF

Gas Station: 3,250 SF

Total Bldg Area: 10,222 SF

Proposed Parking: 28



HARMONY VIEW RETAIL PADS

NE 18TH STREET & NE 172ND AVE

VANCOUVER, WA

SITE PLAN, LOT B

LOT B

Net Area: 1.74 Acres

3. QSR: 5,000 SF

4. Retail: 12,000 SF

Total Bldg Area: 17,000 SF

Proposed Parking: 62

