

Plaza Robal

63450 N HIGHWAY 97, BEND, OREGON



available up to 9,170 SF



- 9,170 (divisible) SF of Restaurant Infrastructure
- Excellent retail space in Bend's Retail Hub, servicing surrounding communities of Bend, Redmond, Madras, Prineville & Sisters
- Neighboring retailers include: Target, Costco, Home Depot, Lowes, Best Buy, Bed Bath & Beyond, PetSmart and more
- Great visibility to Highway 97
- Traffic count for Highway 97 at Robal Ln - 26,422 (ADT 2025)

COSTCO
WHOLESALE



ULTA
BEAUTY



Kara Phelps kara@hsmppacific.com | 503 245 1400 *Melissa Martin* melissa@hsmppacific.com | 503-245-1400

4260 Galewood St. Lake Oswego, OR 97035 | 503-245-1400 | www.hsmppacific.com

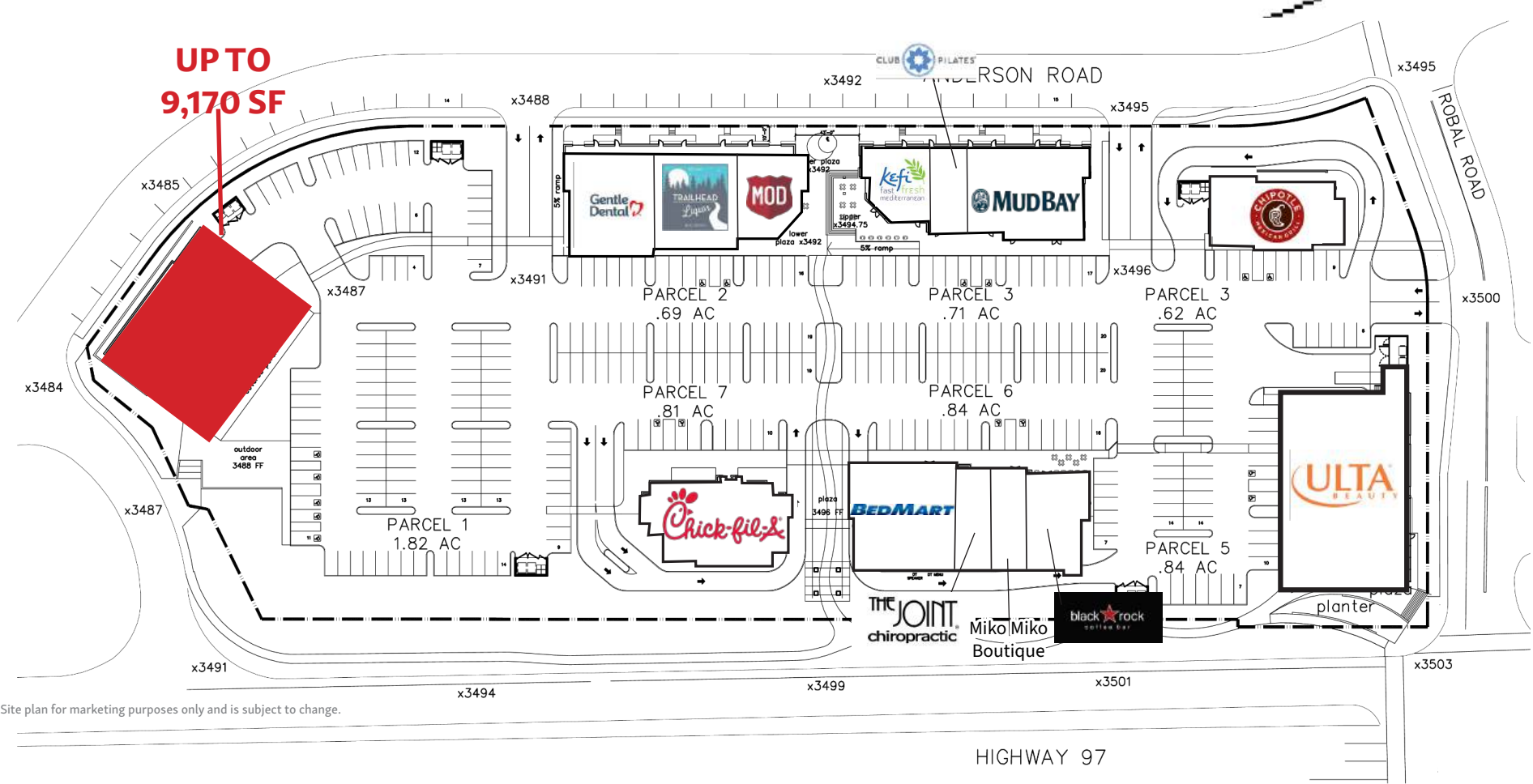
A MEMBER OF
CHAINLINKS
RETAIL ADVISORS

USNI
PACIFIC
retail solutions

Shopping Center Photos



Trade Area & Site Information



Site plan for marketing purposes only and is subject to change.

Demographics:



Population

1 mile: 6,450
3 miles: 41,000
5 miles: 100,133
10 miles: 209,626



Average Household Income

1 mile: \$140,709
3 miles: \$110,174
5 miles: \$134,831
10 miles: \$126,484



Daytime Population

1 mile: 2,682
3 miles: 17,307
5 miles: 46,423
10 miles: 73,054



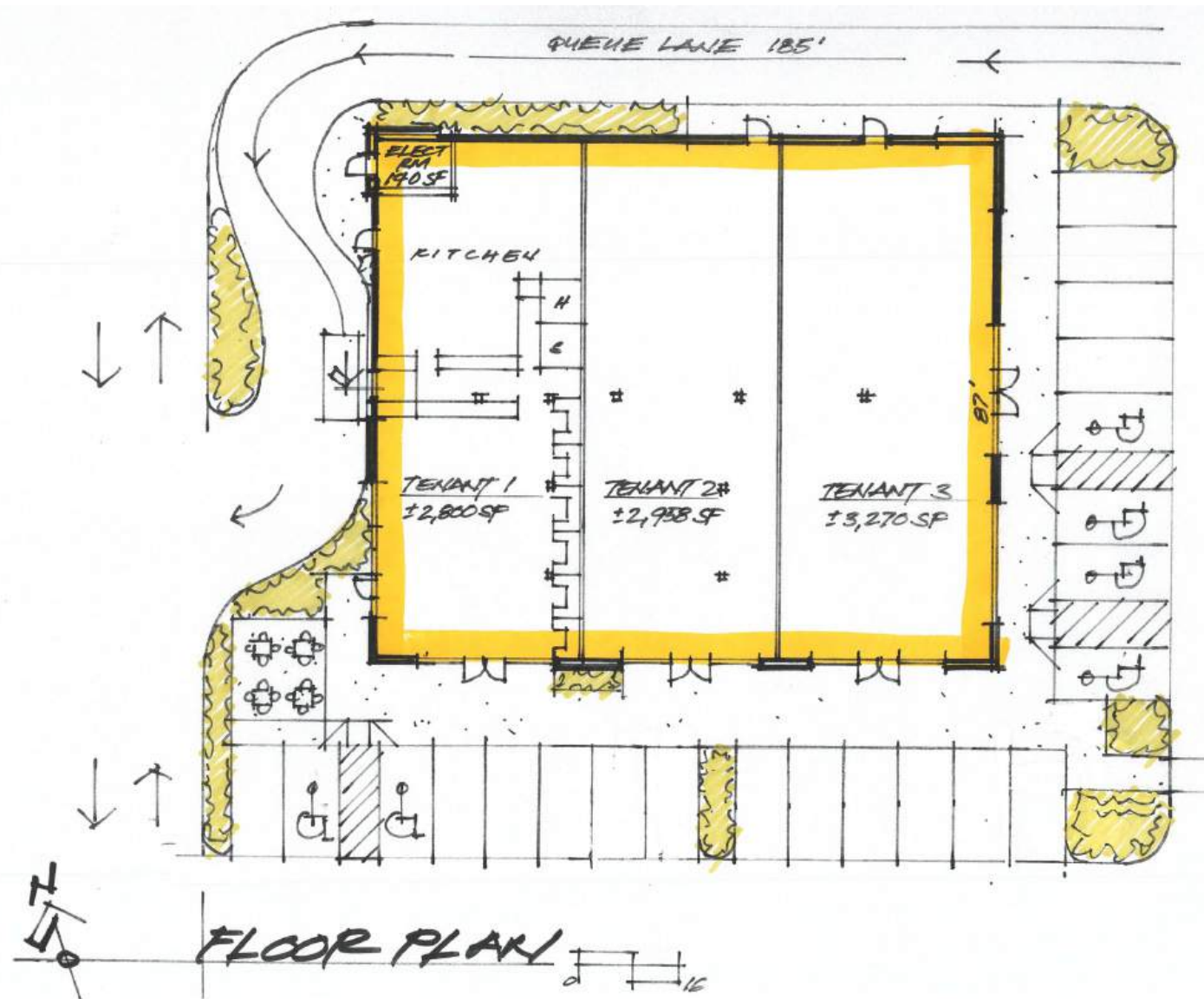
Kara Phelps kara@hsm Pacific.com | 503 245 1400 Melissa Martin melissa@hsm Pacific.com | 503-245-1400



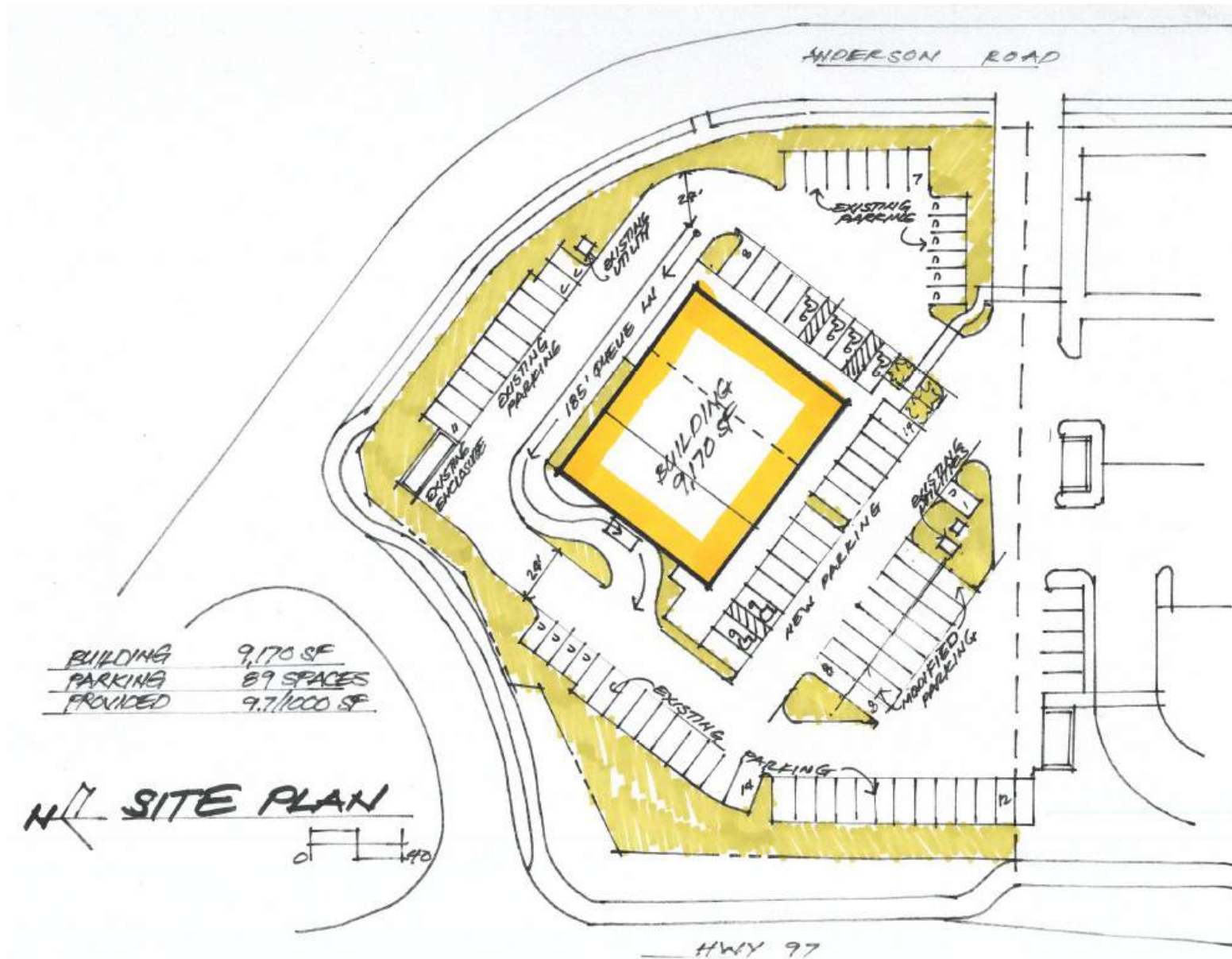
The information herein has been obtained from sources we deem reliable. We do not, however, guarantee its accuracy. All information should be verified prior to purchase/leasing.

Layout Options

Demised Option:

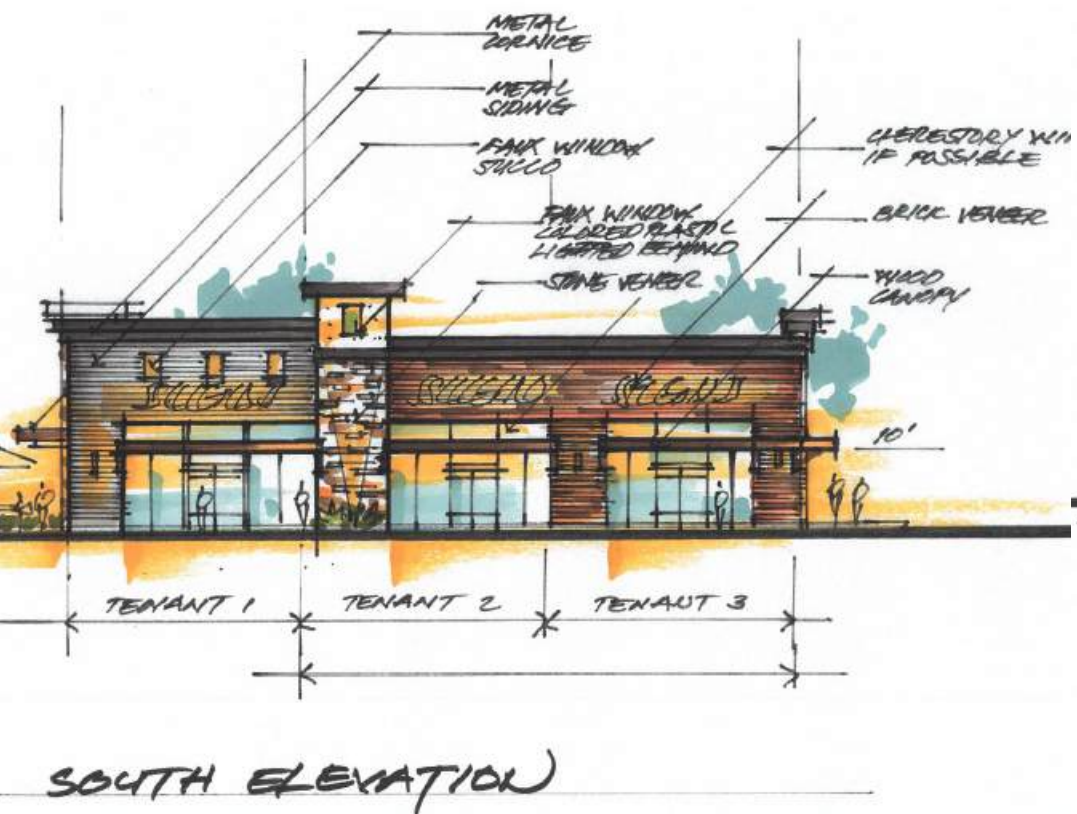
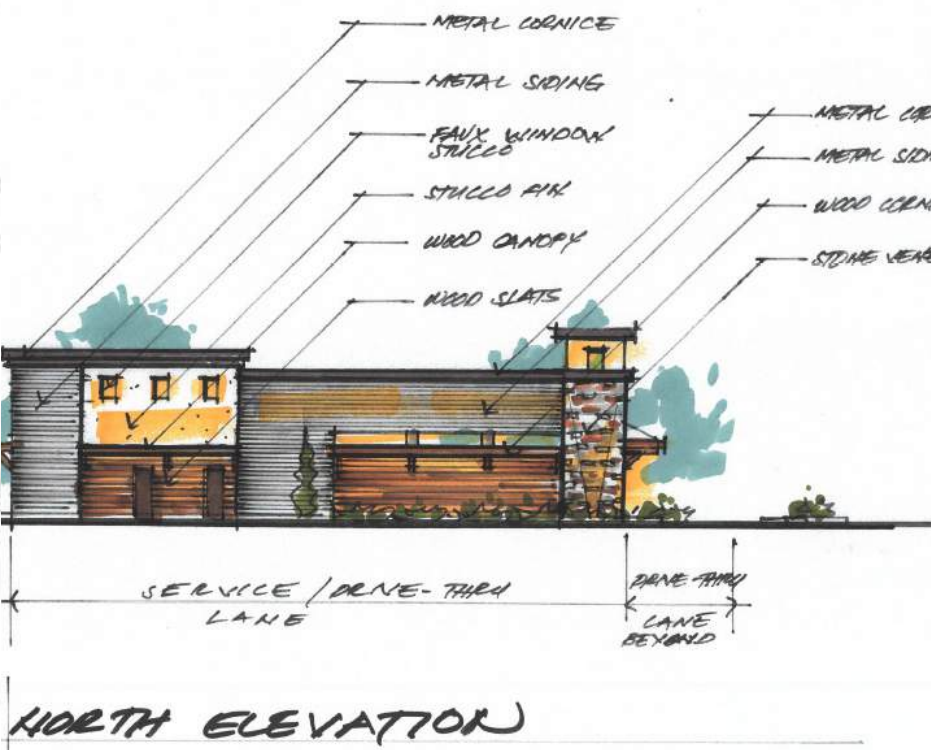


Stand Alone Option:



**Flexible suite configurations*

Prospective Elevations



Site Plan

