

POWELL BLVD. ANCHOR SPACE

3031 SE POWELL BLVD., PORTLAND, OR



31,954 SF of Anchor Space For Lease

- Excellent retail space fronting Powell Blvd.
- Powell Blvd. is a major east/west aerial into downtown Portland with over 30,000 cars per day.
- 89 exclusive parking stalls, 70 of the stalls are located in a secure parking garage below store.
- Surrounded by dense neighborhood residential and strong daytime employment.

DEMOGRAPHICS



1 MILE - 27,623
3 MILE - 209,879
5 MILE - 498,011



AVERAGE
1 MILE - \$137,351
3 MILE - \$125,653
5 MILE - \$136,800



1 MILE - 12,353
3 MILE - 183,318
5 MILE - 314,745

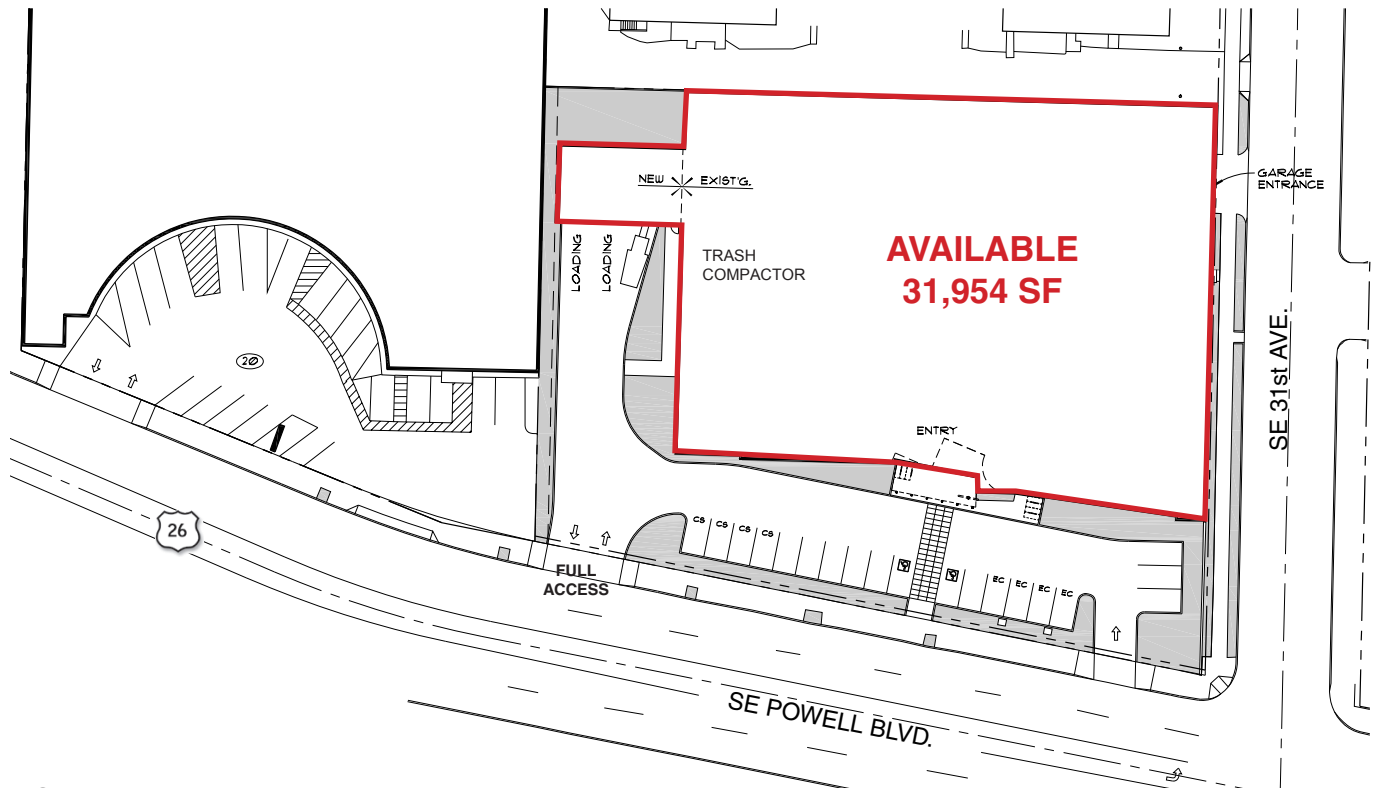
FOR LEASING INFORMATION CONTACT:

Michael S. Heerman
michael@hsmPacific.com

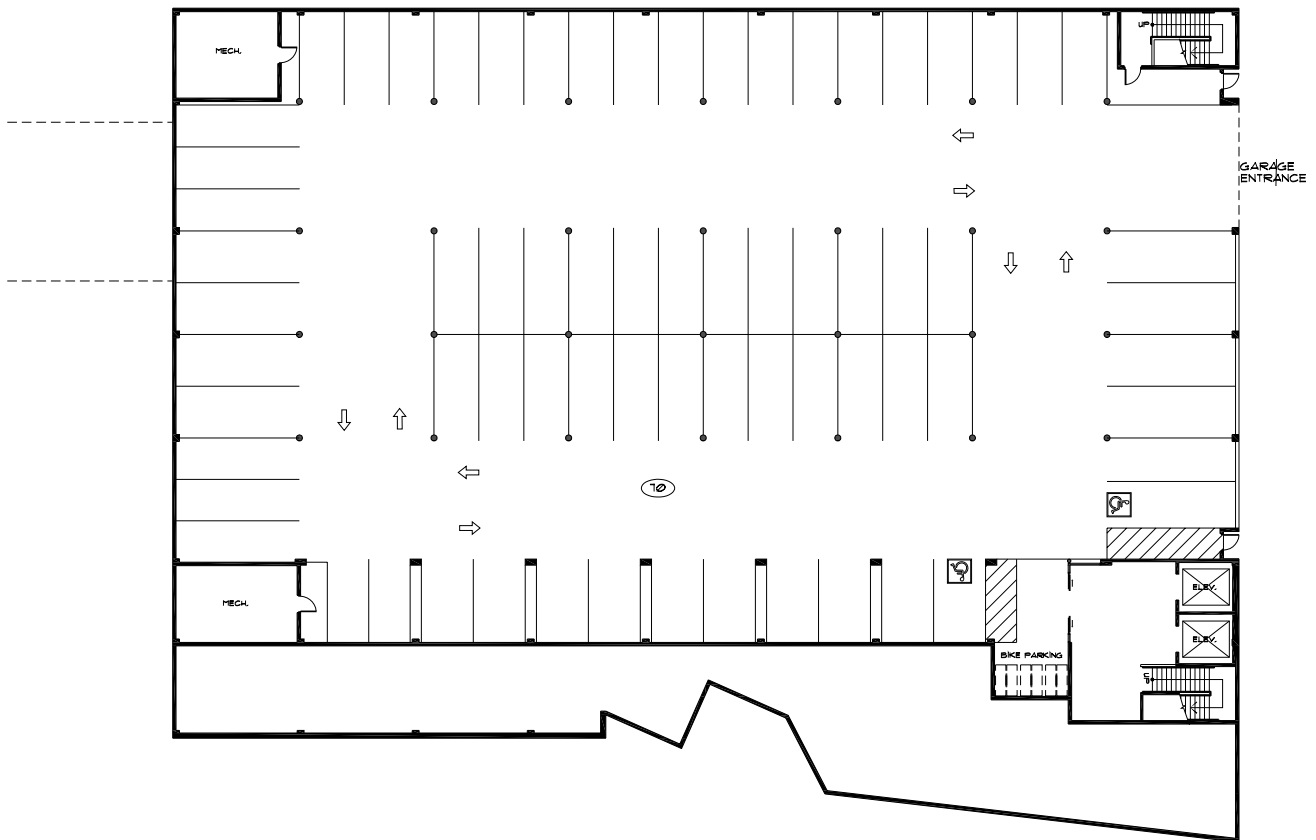
Brock Switzer
brock@hsmPacific.com



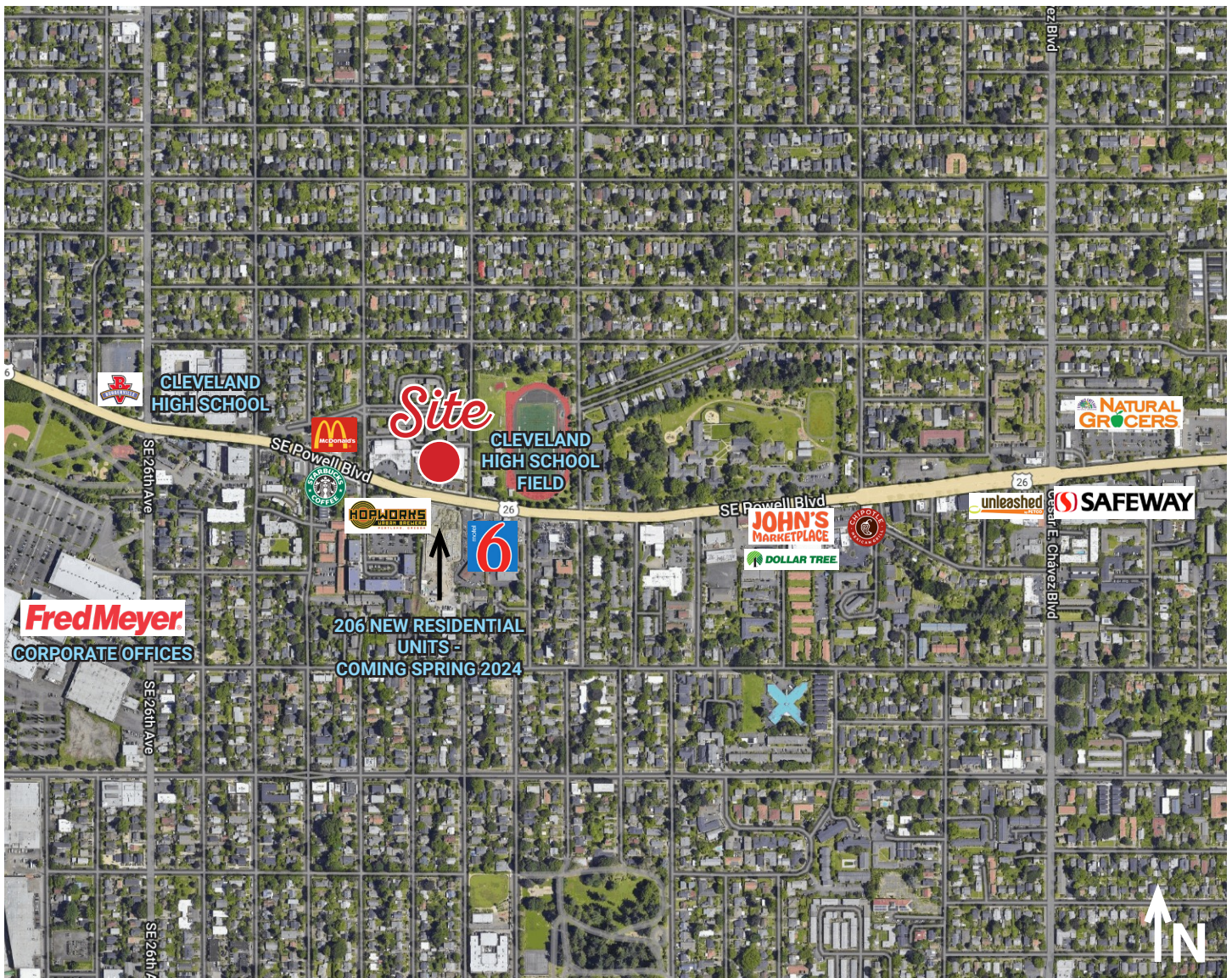
Site Plan



Parking Garage Plan



Aerial



FOR LEASING INFORMATION CONTACT:

Michael S. Heerman
michael@hsmacific.com

Brock Switzer
brock@hsmacific.com

