

POWELL SQUARE



- Call for Rates
- High traffic intersection, 36,500 cpd
- Across from Safeway
- Pylon signage available

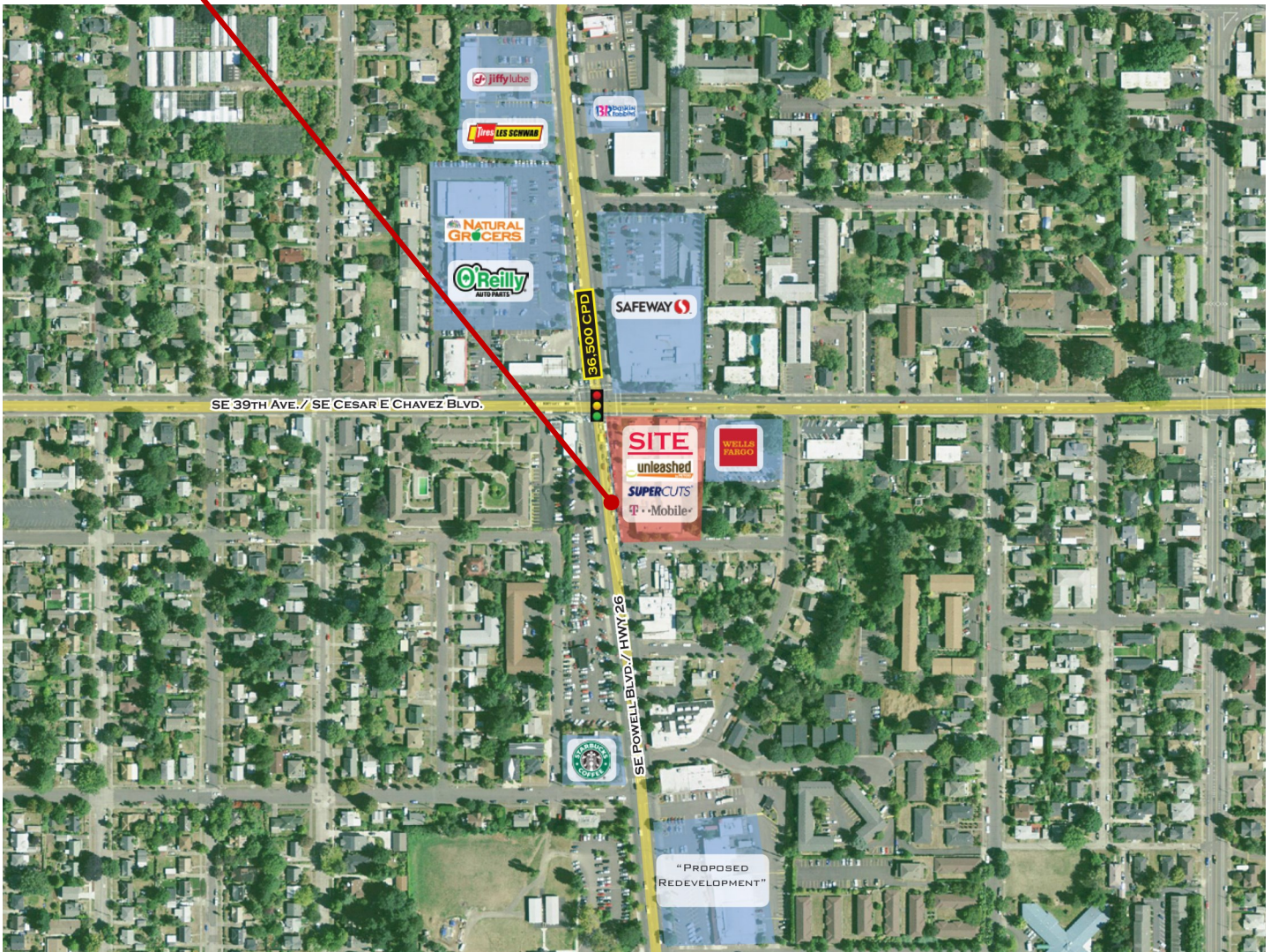
RETAIL FOR LEASE

AVAILABLE SPACE:

1,233 SF

2,117 SF

Total Available: 3,350 SF



CONTACT



Doug Magnusen
503-245-1400 Ext 516 - doug@hsmPacific.com



CHAINLINKS
RETAIL ADVISORS

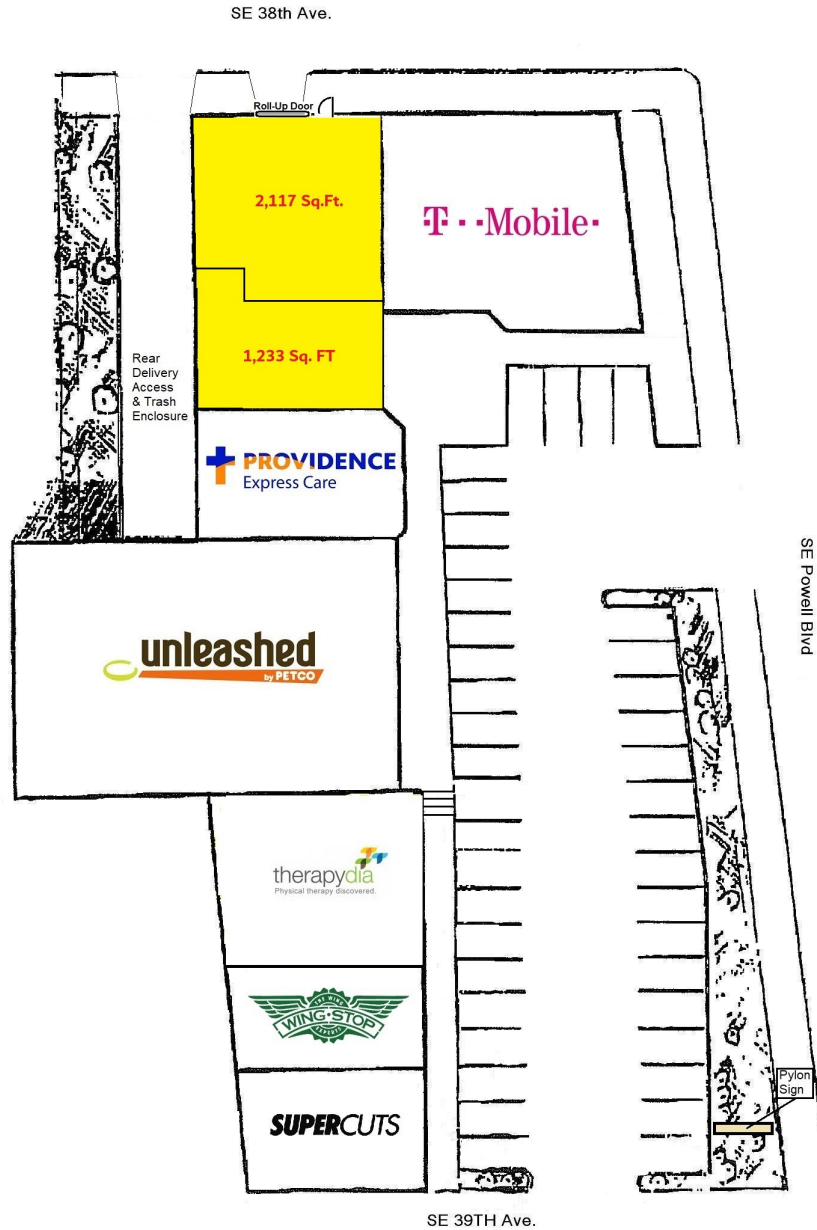
HSM Pacific Realty, Inc.
4260 Galewood St Suite B, Lake Oswego

www.hsmPacific.com

DEMOGRAPHICS

<u>2021 Estimated</u>	<u>1 mile</u>	<u>3 mile</u>	<u>5 mile</u>
Population	31,928	213,520	523,018
DAYTIME POPULATION	8,509	154,252	334,620

Powell Square



CONTACT



Doug Magnusen
503-245-1400 Ext 516 - doug@hsmPacific.com



CHAINLINKS
RETAIL ADVISORS

HSM Pacific Realty, Inc.
4260 Galewood St Suite B, Lake Oswego

www.hsmPacific.com

FULL PROFILE

2000-2010 Census, 2021 Estimates with 2026 Projections

Calculated using Weighted Block Centroid from Block Groups



Lat/Lon: 45.4974/-122.6226

RF1

SE Powell Blvd & SE 39th Ave

		1 mi radius	3 mi radius	5 mi radius
POPULATION	2021 Estimated Population	31,928	213,520	523,018
	2026 Projected Population	33,068	222,817	542,941
	2010 Census Population	28,371	185,247	458,252
	2000 Census Population	27,856	174,596	420,457
	Projected Annual Growth 2021 to 2026	0.7%	0.9%	0.8%
	Historical Annual Growth 2000 to 2021	0.7%	1.1%	1.2%
HOUSEHOLDS	2021 Estimated Households	14,759	100,664	241,478
	2026 Projected Households	15,726	108,684	259,871
	2010 Census Households	12,747	83,278	201,443
	2000 Census Households	12,290	77,515	182,627
	Projected Annual Growth 2021 to 2026	1.3%	1.6%	1.5%
	Historical Annual Growth 2000 to 2021	1.0%	1.4%	1.5%
AGE	2021 Est. Population Under 10 Years	9.9%	9.5%	9.7%
	2021 Est. Population 10 to 19 Years	8.1%	8.3%	9.1%
	2021 Est. Population 20 to 29 Years	15.8%	15.3%	15.0%
	2021 Est. Population 30 to 44 Years	31.8%	29.7%	27.6%
	2021 Est. Population 45 to 59 Years	17.1%	18.5%	18.6%
	2021 Est. Population 60 to 74 Years	12.6%	13.6%	14.4%
	2021 Est. Population 75 Years or Over	4.7%	5.2%	5.6%
	2021 Est. Median Age	36.1	37.2	37.6
MARITAL STATUS & GENDER	2021 Est. Male Population	49.6%	49.7%	49.6%
	2021 Est. Female Population	50.4%	50.3%	50.4%
	2021 Est. Never Married	47.1%	43.5%	42.8%
	2021 Est. Now Married	37.7%	36.9%	37.1%
	2021 Est. Separated or Divorced	12.5%	16.0%	16.4%
	2021 Est. Widowed	2.7%	3.6%	3.8%
INCOME	2021 Est. HH Income \$200,000 or More	9.5%	10.2%	10.6%
	2021 Est. HH Income \$150,000 to \$199,999	9.8%	8.3%	7.9%
	2021 Est. HH Income \$100,000 to \$149,999	19.3%	18.0%	17.4%
	2021 Est. HH Income \$75,000 to \$99,999	15.2%	15.1%	13.9%
	2021 Est. HH Income \$50,000 to \$74,999	20.1%	17.4%	16.7%
	2021 Est. HH Income \$35,000 to \$49,999	8.7%	9.8%	9.9%
	2021 Est. HH Income \$25,000 to \$34,999	6.0%	6.6%	7.0%
	2021 Est. HH Income \$15,000 to \$24,999	4.8%	5.1%	5.7%
	2021 Est. HH Income Under \$15,000	6.6%	9.6%	10.8%
	2021 Est. Average Household Income	\$98,348	\$98,102	\$100,502
	2021 Est. Median Household Income	\$82,534	\$80,896	\$80,287
	2021 Est. Per Capita Income	\$45,609	\$46,459	\$46,671
	2021 Est. Total Businesses	1,450	17,276	37,582
	2021 Est. Total Employees	8,509	154,252	334,620

This report was produced using data from private and government sources deemed to be reliable. The information herein is provided without representation or warranty.

FULL PROFILE

2000-2010 Census, 2021 Estimates with 2026 Projections

Calculated using Weighted Block Centroid from Block Groups



Lat/Lon: 45.4974/-122.6226

RF1

SE Powell Blvd & SE 39th Ave

1 mi radius 3 mi radius 5 mi radius

RACE	2021 Est. White	77.2%	76.9%	75.0%
	2021 Est. Black	4.9%	4.2%	5.8%
	2021 Est. Asian or Pacific Islander	8.1%	9.3%	8.9%
	2021 Est. American Indian or Alaska Native	0.9%	1.0%	1.0%
	2021 Est. Other Races	9.0%	8.6%	9.4%
HISPANIC	2021 Est. Hispanic Population	3,426	21,425	55,127
	2021 Est. Hispanic Population	10.7%	10.0%	10.5%
	2026 Proj. Hispanic Population	11.5%	10.7%	11.1%
	2010 Hispanic Population	5.8%	7.0%	8.6%
EDUCATION (Adults 25 or Older)	2021 Est. Adult Population (25 Years or Over)	24,298	163,432	393,049
	2021 Est. Elementary (Grade Level 0 to 8)	1.9%	2.4%	2.8%
	2021 Est. Some High School (Grade Level 9 to 11)	2.7%	2.9%	3.7%
	2021 Est. High School Graduate	10.7%	13.0%	15.0%
	2021 Est. Some College	19.2%	19.7%	19.6%
	2021 Est. Associate Degree Only	6.1%	6.3%	6.8%
	2021 Est. Bachelor Degree Only	33.8%	33.0%	30.4%
	2021 Est. Graduate Degree	25.5%	22.7%	21.7%
HOUSING	2021 Est. Total Housing Units	15,218	104,454	251,503
	2021 Est. Owner-Occupied	47.0%	44.5%	44.5%
	2021 Est. Renter-Occupied	50.0%	51.9%	51.5%
	2021 Est. Vacant Housing	3.0%	3.6%	4.0%
HOMES BUILT BY YEAR	2021 Homes Built 2010 or later	6.1%	7.9%	7.1%
	2021 Homes Built 2000 to 2009	4.3%	6.7%	8.7%
	2021 Homes Built 1990 to 1999	5.6%	6.6%	8.6%
	2021 Homes Built 1980 to 1989	6.4%	6.2%	7.0%
	2021 Homes Built 1970 to 1979	11.1%	10.2%	10.9%
	2021 Homes Built 1960 to 1969	9.4%	9.1%	8.9%
	2021 Homes Built 1950 to 1959	11.0%	10.6%	11.1%
	2021 Homes Built Before 1949	43.0%	39.1%	33.7%
HOME VALUES	2021 Home Value \$1,000,000 or More	0.4%	2.9%	4.3%
	2021 Home Value \$500,000 to \$999,999	44.9%	38.7%	35.8%
	2021 Home Value \$400,000 to \$499,999	29.1%	23.1%	21.5%
	2021 Home Value \$300,000 to \$399,999	20.1%	23.5%	24.1%
	2021 Home Value \$200,000 to \$299,999	4.0%	8.6%	9.5%
	2021 Home Value \$150,000 to \$199,999	0.3%	1.0%	1.3%
	2021 Home Value \$100,000 to \$149,999	0.3%	0.4%	0.6%
	2021 Home Value \$50,000 to \$99,999	0.5%	0.6%	0.8%
	2021 Home Value \$25,000 to \$49,999	0.4%	0.5%	0.9%
	2021 Home Value Under \$25,000	0.1%	0.7%	1.2%
	2021 Median Home Value	\$497,929	\$485,745	\$483,762
	2021 Median Rent	\$1,281	\$1,275	\$1,233

This report was produced using data from private and government sources deemed to be reliable. The information herein is provided without representation or warranty.

FULL PROFILE

2000-2010 Census, 2021 Estimates with 2026 Projections

Calculated using Weighted Block Centroid from Block Groups



Lat/Lon: 45.4974/-122.6226

RF1

SE Powell Blvd & SE 39th Ave

		1 mi radius	3 mi radius	5 mi radius
LABOR FORCE	2021 Est. Labor Population Age 16 Years or Over	27,216	182,711	444,197
	2021 Est. Civilian Employed	72.1%	67.4%	65.3%
	2021 Est. Civilian Unemployed	6.1%	5.5%	5.3%
	2021 Est. in Armed Forces	0.1%	-	-
	2021 Est. not in Labor Force	21.7%	27.0%	29.3%
	2021 Labor Force Males	49.1%	49.5%	49.4%
	2021 Labor Force Females	50.9%	50.5%	50.6%
OCCUPATION	2021 Occupation: Population Age 16 Years or Over	19,618	123,113	290,200
	2021 Mgmt, Business, & Financial Operations	17.4%	18.3%	18.6%
	2021 Professional, Related	36.2%	35.5%	32.6%
	2021 Service	17.6%	16.8%	17.0%
	2021 Sales, Office	17.5%	17.1%	18.1%
	2021 Farming, Fishing, Forestry	0.5%	0.5%	0.5%
	2021 Construction, Extraction, Maintenance	3.1%	4.0%	4.3%
	2021 Production, Transport, Material Moving	7.6%	7.8%	8.9%
	2021 White Collar Workers	71.2%	70.9%	69.3%
	2021 Blue Collar Workers	28.8%	29.1%	30.7%
TRANSPORTATION TO WORK	2021 Drive to Work Alone	51.7%	53.8%	56.1%
	2021 Drive to Work in Carpool	5.8%	7.2%	7.7%
	2021 Travel to Work by Public Transportation	17.7%	15.2%	13.9%
	2021 Drive to Work on Motorcycle	0.4%	0.2%	0.2%
	2021 Walk or Bicycle to Work	14.3%	12.9%	12.0%
	2021 Other Means	0.5%	0.9%	1.0%
	2021 Work at Home	9.6%	9.9%	9.1%
TRAVEL TIME	2021 Travel to Work in 14 Minutes or Less	17.6%	19.0%	20.6%
	2021 Travel to Work in 15 to 29 Minutes	42.0%	41.6%	40.7%
	2021 Travel to Work in 30 to 59 Minutes	40.1%	35.9%	33.7%
	2021 Travel to Work in 60 Minutes or More	6.7%	6.8%	6.4%
	2021 Average Travel Time to Work	25.7	24.9	24.1
CONSUMER EXPENDITURE	2021 Est. Total Household Expenditure	\$1.03 B	\$6.99 B	\$16.99 B
	2021 Est. Apparel	\$36.67 M	\$249.05 M	\$605.96 M
	2021 Est. Contributions, Gifts	\$59.86 M	\$409.95 M	\$1 B
	2021 Est. Education, Reading	\$34.38 M	\$236.32 M	\$581.28 M
	2021 Est. Entertainment	\$58.6 M	\$396.98 M	\$965.87 M
	2021 Est. Food, Beverages, Tobacco	\$157.21 M	\$1.07 B	\$2.59 B
	2021 Est. Furnishings, Equipment	\$36.44 M	\$246.69 M	\$599.6 M
	2021 Est. Health Care, Insurance	\$92.67 M	\$627.92 M	\$1.52 B
	2021 Est. Household Operations, Shelter, Utilities	\$333.36 M	\$2.27 B	\$5.52 B
	2021 Est. Miscellaneous Expenses	\$19.54 M	\$132.76 M	\$323.07 M
	2021 Est. Personal Care	\$13.86 M	\$94.06 M	\$228.47 M
	2021 Est. Transportation	\$186.86 M	\$1.26 B	\$3.06 B

This report was produced using data from private and government sources deemed to be reliable. The information herein is provided without representation or warranty.