

# COMMERCIAL LAND FOR SALE

SOUTHEAST CORNER OF CANAL BLVD. & VETERANS WAY, REDMOND, OR



- SALE PRICE: \$1,699,000.00
- 1.59 ACRES (69,240 SF)
- ZONING: C1 COMMERCIAL
- PRIME COMMERCIAL DEVELOPMENT LAND IN REDMOND, OR

FOR LEASING INFORMATION, CONTACT:

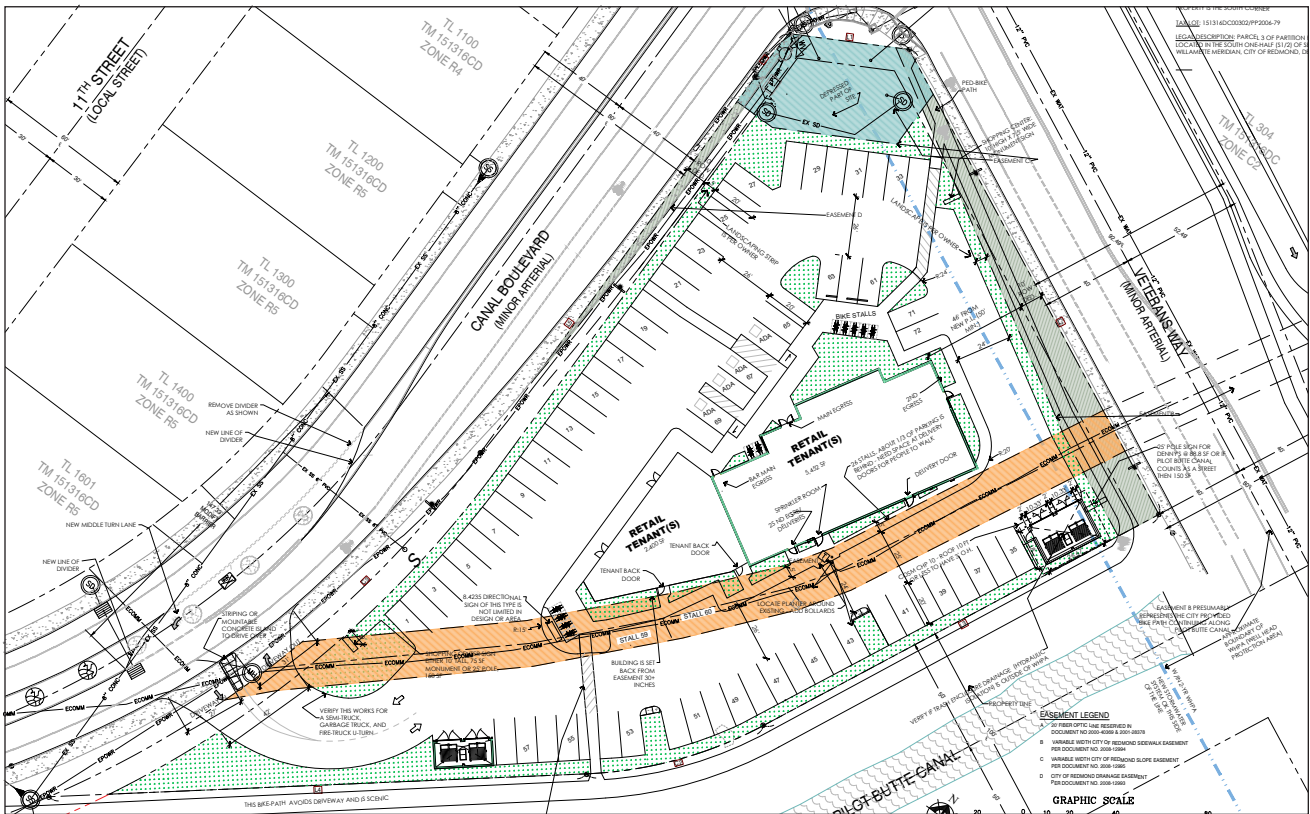
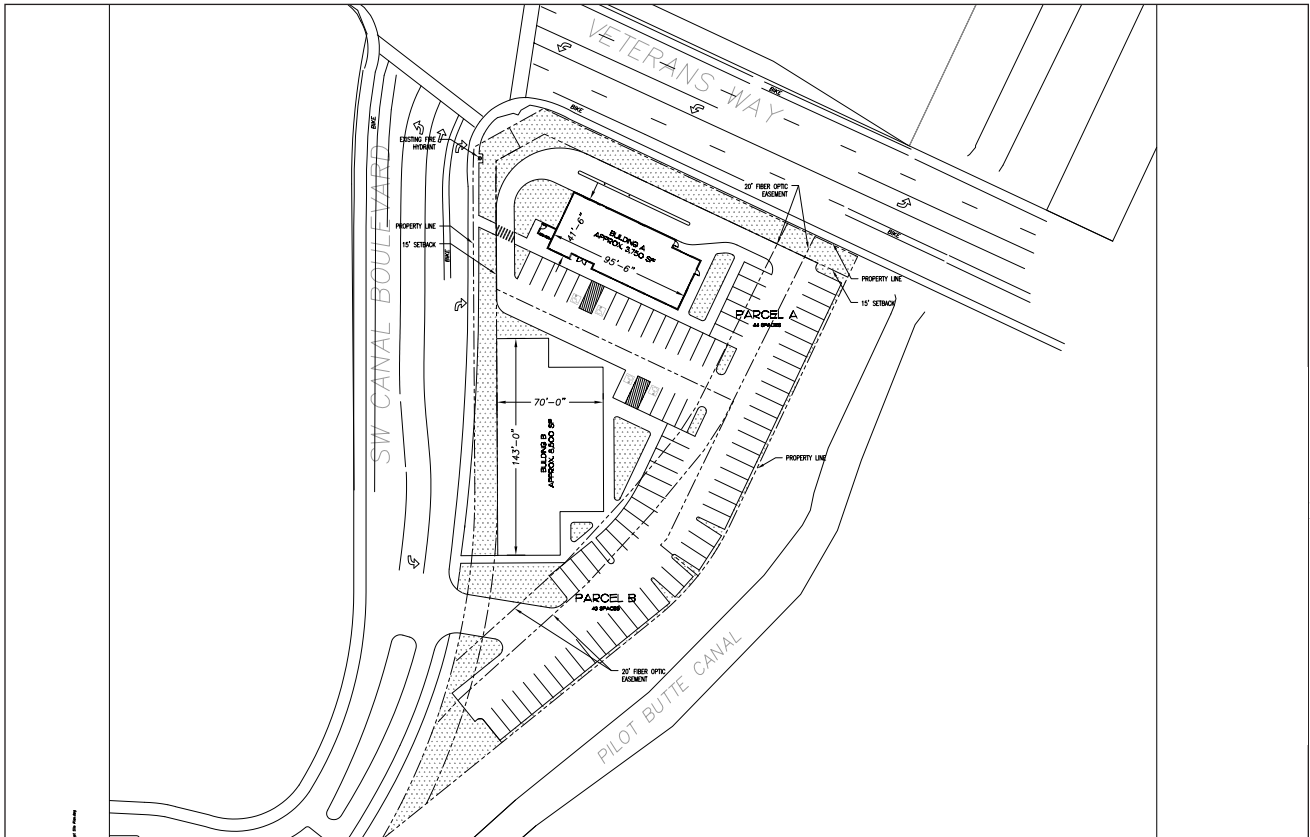
**Doug Magnusen**  
doug@hsmpacific.com

503-245-1400 X516 | [www.hsmpacific.com](http://www.hsmpacific.com) | 4260 Galewood St, Lake Oswego, OR 97035





# Proposed Development Layouts



FOR LEASING INFORMATION, CONTACT:

**Doug Magnusen**

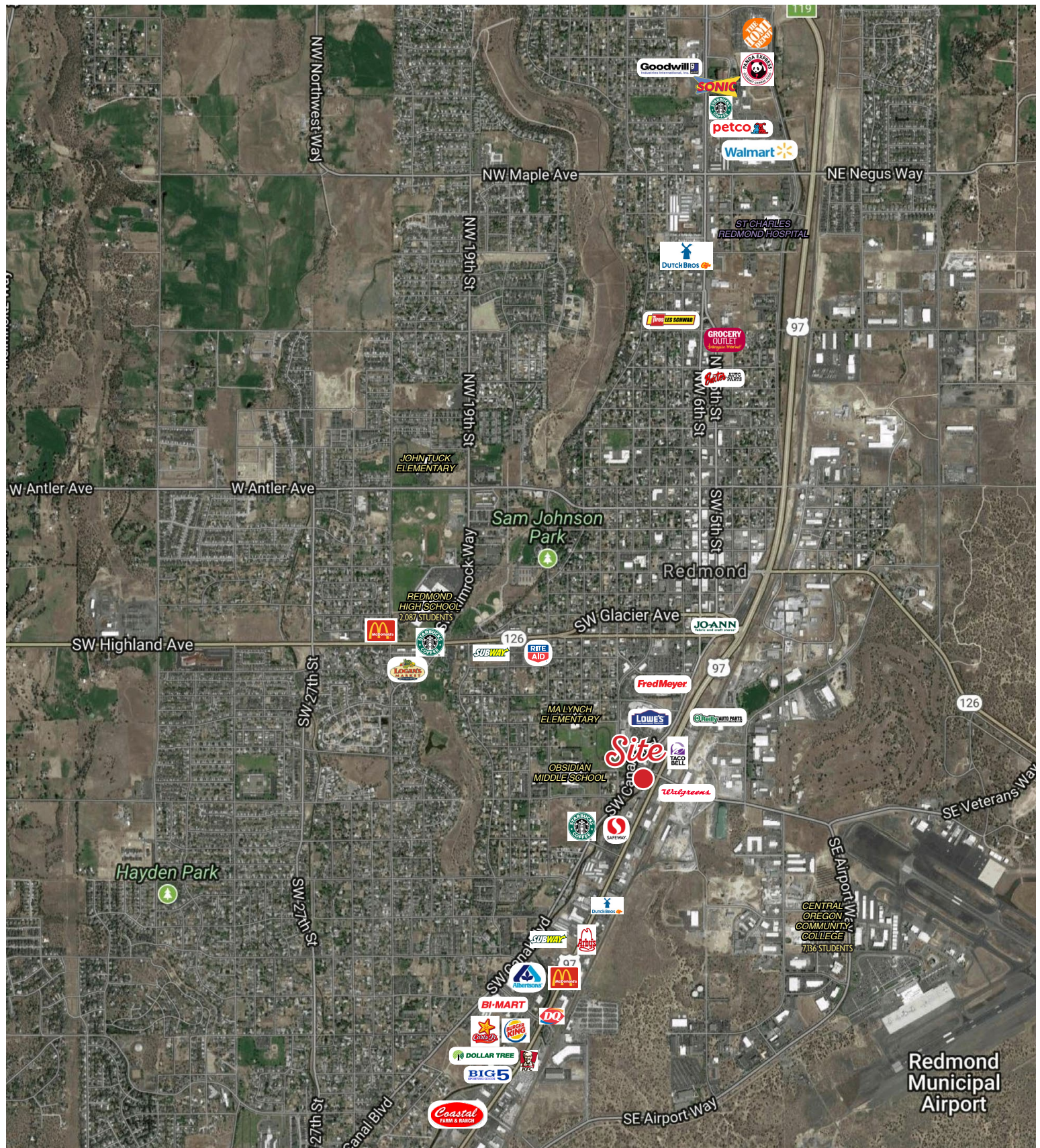
doug@hsm Pacific.com

503-245-1400 X516 | [www.hsm Pacific.com](http://www.hsm Pacific.com) | 4260 Galewood St, Lake Oswego, OR 97035





# Trade Area Aerial



FOR LEASING INFORMATION, CONTACT:

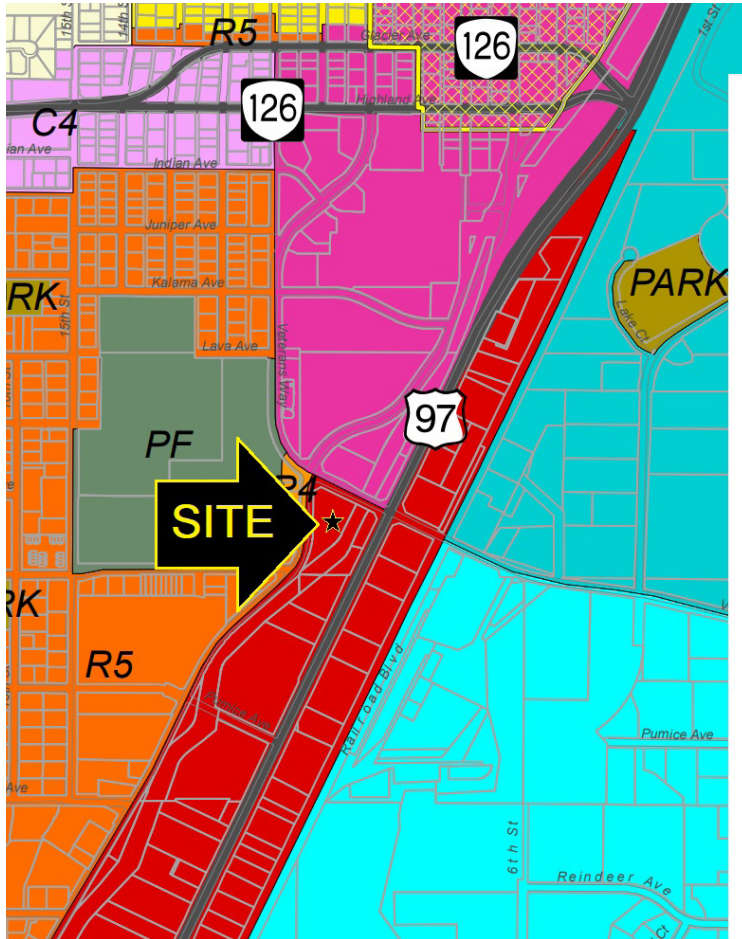
**Doug Magnusen**  
doug@hsm Pacific.com

503-245-1400 X516 | [www.hsm Pacific.com](http://www.hsm Pacific.com) | 4260 Galewood St, Lake Oswego, OR 97035





# Zoning



## Redmond Zoning

### Legend

	Airport
	Airport Compatible
	C1 - Strip Service Commercial
	C2 - Central Business District Commercial
	C3 - Special Service Commercial
	C4 - Limited Service Commercial
	C4A - Limited Service Commercial
	C5 - Tourist Commercial
	FG - Fairgrounds
	Large Lot Industrial
	M1 - Light Industrial
	M2 - Heavy Industrial
	MUE - Mixed Use Employment
	MUE-WRAP - Mixed Use Employment West Redmond Area
	MULW - Mixed Use Live Work
	MUN - Mixed Use Neighborhood
	OSPR - Open Space Park Reserve
	PARK - Park
	PF - Public Facility
	R1 - Limited Residential
	R2 - Limited Residential
	R3 - Limited Residential
	R3A - Limited Residential
	R4 - General Residential
	R5 - High Density Residential

## Demographics

### POPULATION

1 MILE - 6,437  
3 MILE - 34,853  
5 MILE - 41,068

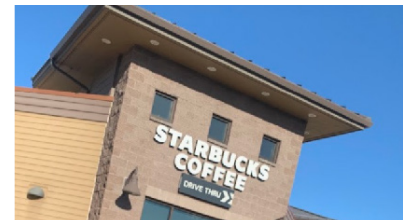
### DAYTIME POPULATION

1 MILE - 7,285  
3 MILE - 12,458  
5 MILE - 13,698

### AVG. HH INCOME

1 MILE - \$82,564  
3 MILE - \$94,045  
5 MILE - \$100,235

## Area Retailers



FOR LEASING INFORMATION, CONTACT:

**Doug Magnusen**  
doug@hsm Pacific.com

503-245-1400 X516 | [www.hsm Pacific.com](http://www.hsm Pacific.com) | 4260 Galewood St, Lake Oswego, OR 97035

