

The Waterfront Vancouver PARKING CENTER

8,941 SF RETAIL
FOR LEASE

COMING SOON!
WHITE BIRCH
design co.



THE WATERFRONT VANCOUVER
PARKING CENTER

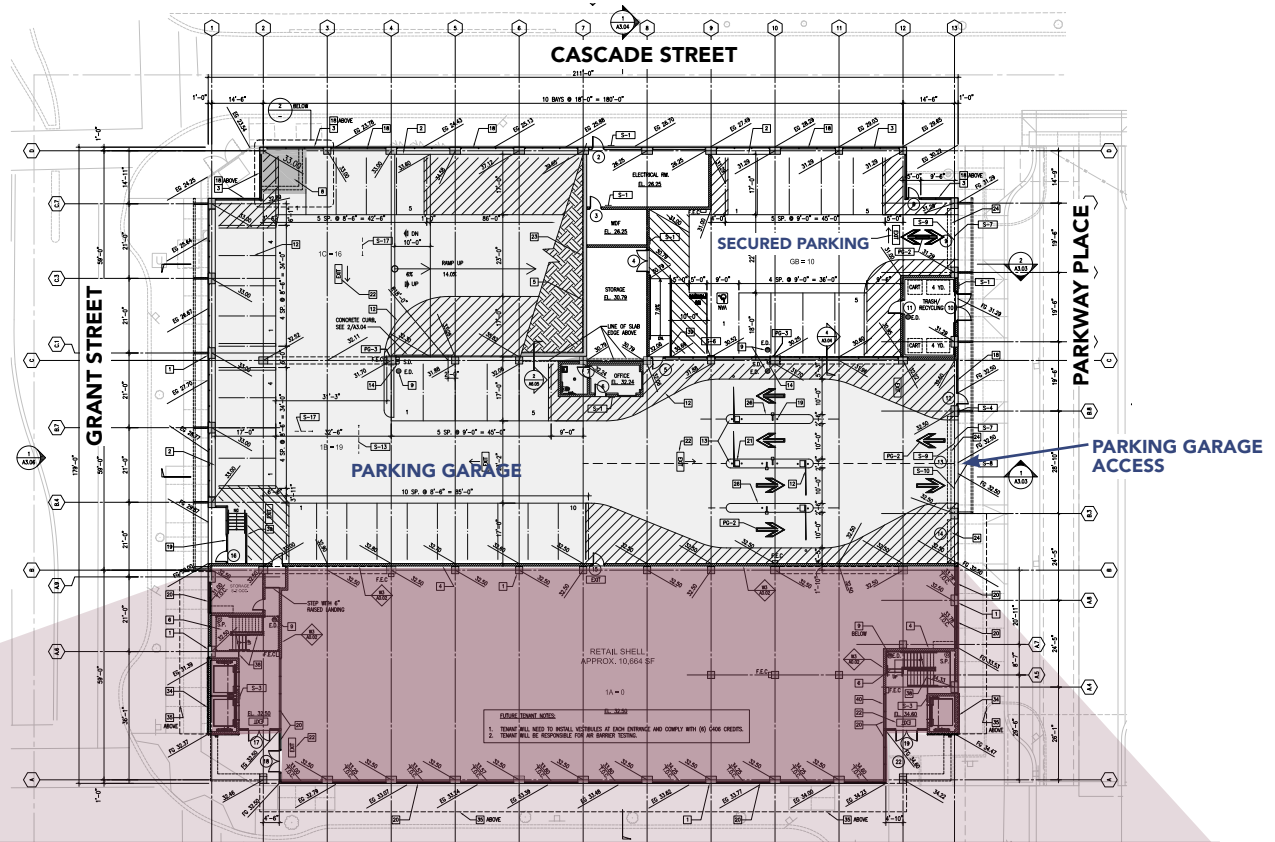
MELISSA MARTIN | melissa@hsmpacific.com | 503-245-1400
4260 Galewood St., Lake Oswego, Oregon | www.hsmpacific.com



DETAILS

THE WATERFRONT VANCOUVER PARKING CENTER

- 8,941 SF available, retail suites can be configured to accommodate multiple retail footprints.
- The Waterfront Vancouver Parking Center (Block 7) is across from the Riverwest Apartments, 206 apartment homes and the Rediviva Apartments, 63 apartment homes.
- Retailers in the immediate area include El Gaucho, Wildfin, Grassa, Orangetheory, Willamette Valley Vineyards, OnPoint, Dos Alas, Maryhill Winery, Twigs.





DAYTIME RENDERING



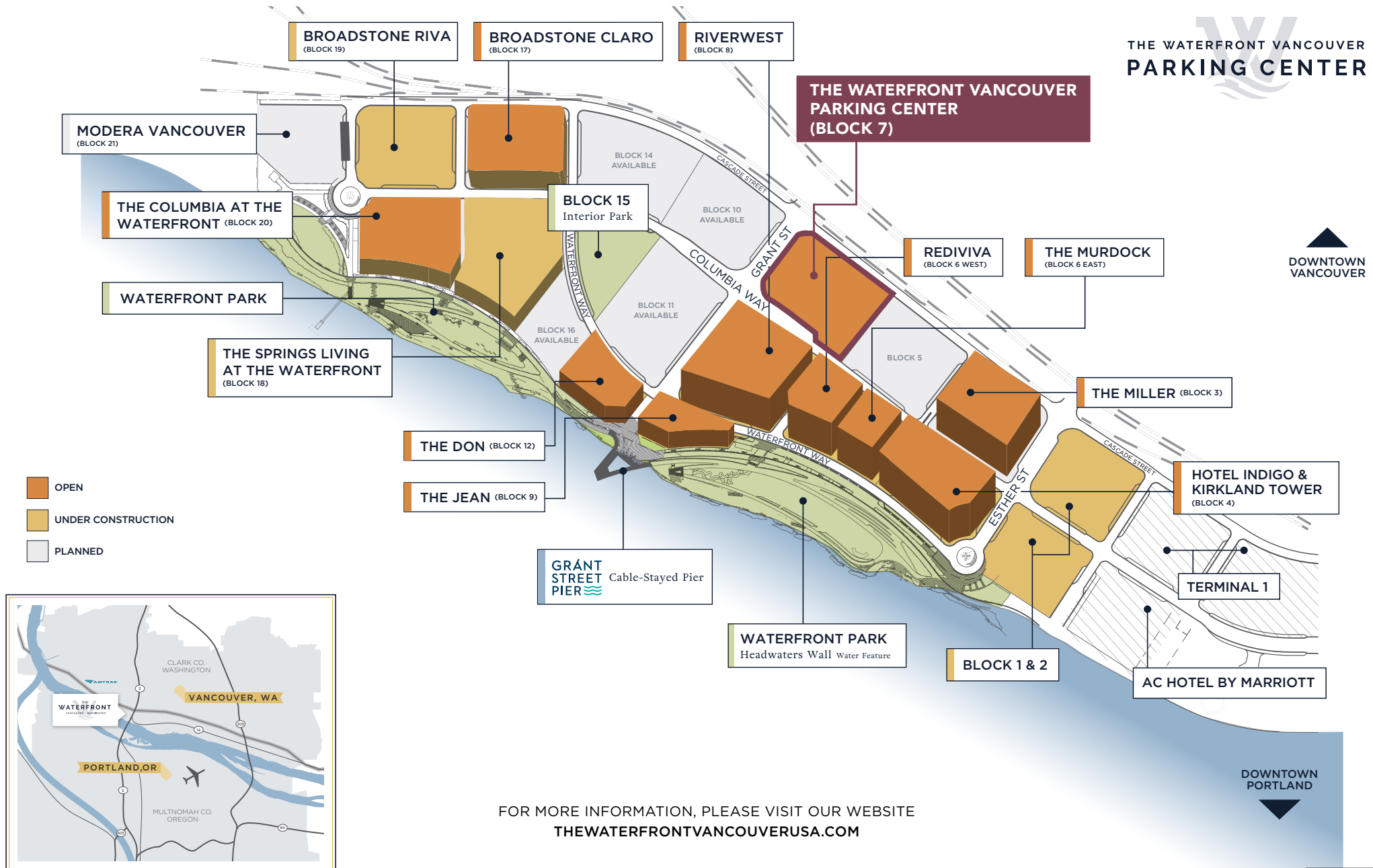
NIGHTTIME RENDERING

AREA FACTS

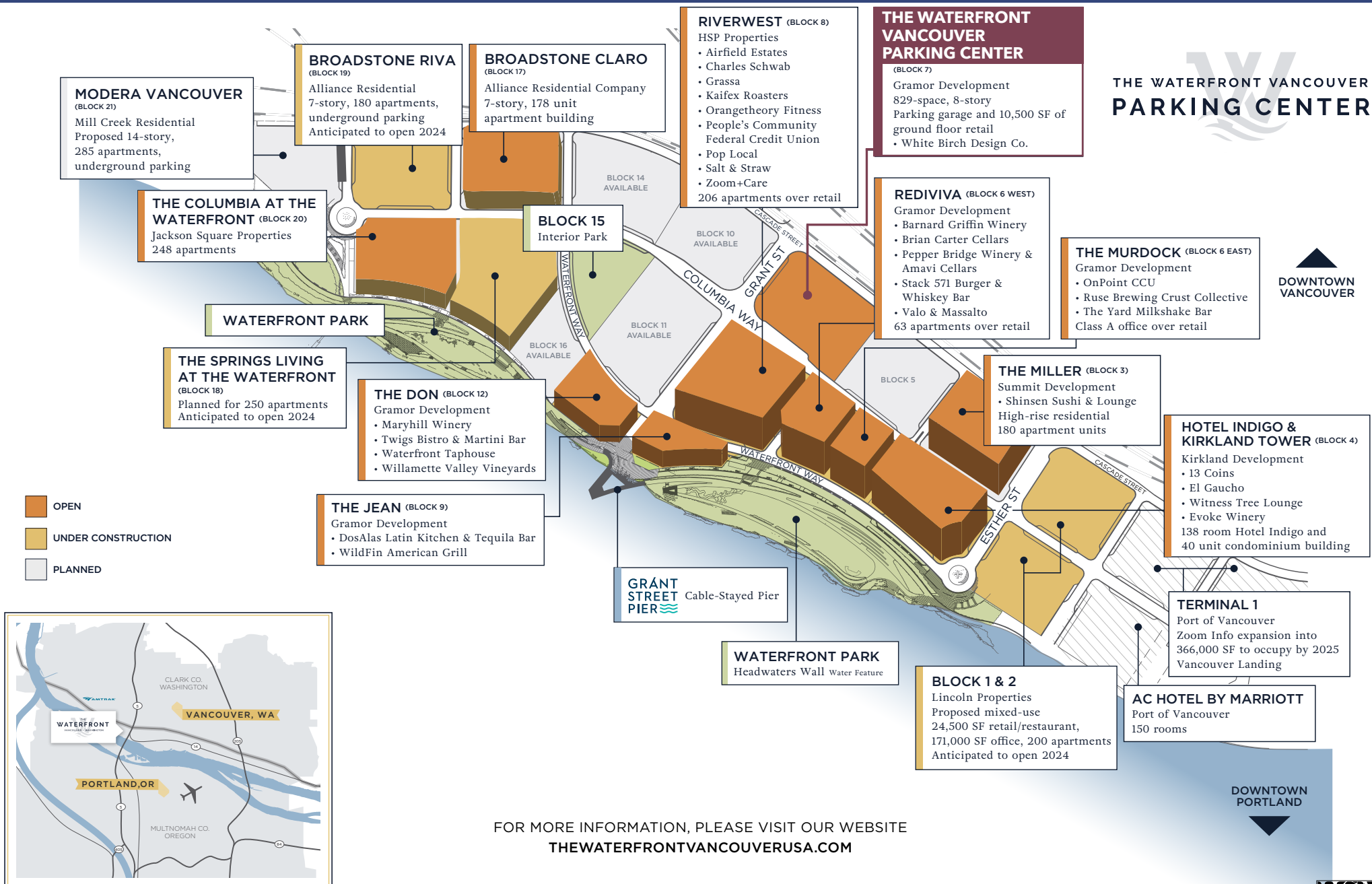
- With 16 city blocks developed, under construction, in planning and \$1.6 billion in direct investment already complete, including a ½ mile waterfront park overlooking the majestic Columbia River, The Waterfront represents the largest residential and commercial development underway in the tri-county region and provides the region with a true world-class destination for shopping, dining and entertainment.
- By 2025, The Waterfront will encompass 2,200 residential units, 600,000 SF of Class A office, 150,000 SF of retail and 288 luxury hotel rooms. When complete, The Waterfront will encompass 20 city blocks over 2.8 million square feet of land, with \$2.6 billion in direct investment.
- Between dollars brought in by hotel guests, residents in the apartments and the potential condominiums, and the soon-to-be-open senior living tower, annual purchasing power of local dwellers is estimated at \$124.5 million annually and growing by 2024.
- Its popularity among residents, visitors, office workers, hotel guests, shoppers and diners has exploded into a new opportunity as The Waterfront Vancouver Parking Center has broken ground for a parking garage, opening in 2024. Facing Columbia Street, north of Parkway Place, the new 8-story garage will feature 829 spaces, with 10% – 83 spaces – allocated for electric vehicle charging stations. It will have three elevators with 10,500 square feet of ground-floor retail space slated for the next wave of high-end retail, restaurants and neighborhood services looking to locate in one of most unique locations in the region.

LOCATION & BLOCK STATUS

THE WATERFRONT VANCOUVER PARKING CENTER



WATERFRONT BLOCKS INFORMATION



SURROUNDING RETAIL



WATERFRONT RETAIL



WATERFRONT RETAIL

